

Mona Vale Road East - Out of hours work

Out of hours work is planned from **8pm to 6am** on the following dates, weather permitting:

- **Tuesday 22, Thursday 24 and Friday 25 September**
- **Tuesday 29 September, Thursday 1 and Friday 2 October**

If work is delayed due to wet weather, we will try and work a different night that same week. We will notify highly impacted residents if there is a change of date.

Our work along the **western end of the project** includes:

- removing rock from the top of the existing rock cutting near the eastern end of Lane Cove Road
- hauling material away from our work zone near the eastern end of Lane Cove Road to our stockpile at the Western Early Works site off Tumburra Street
- ongoing road maintenance.

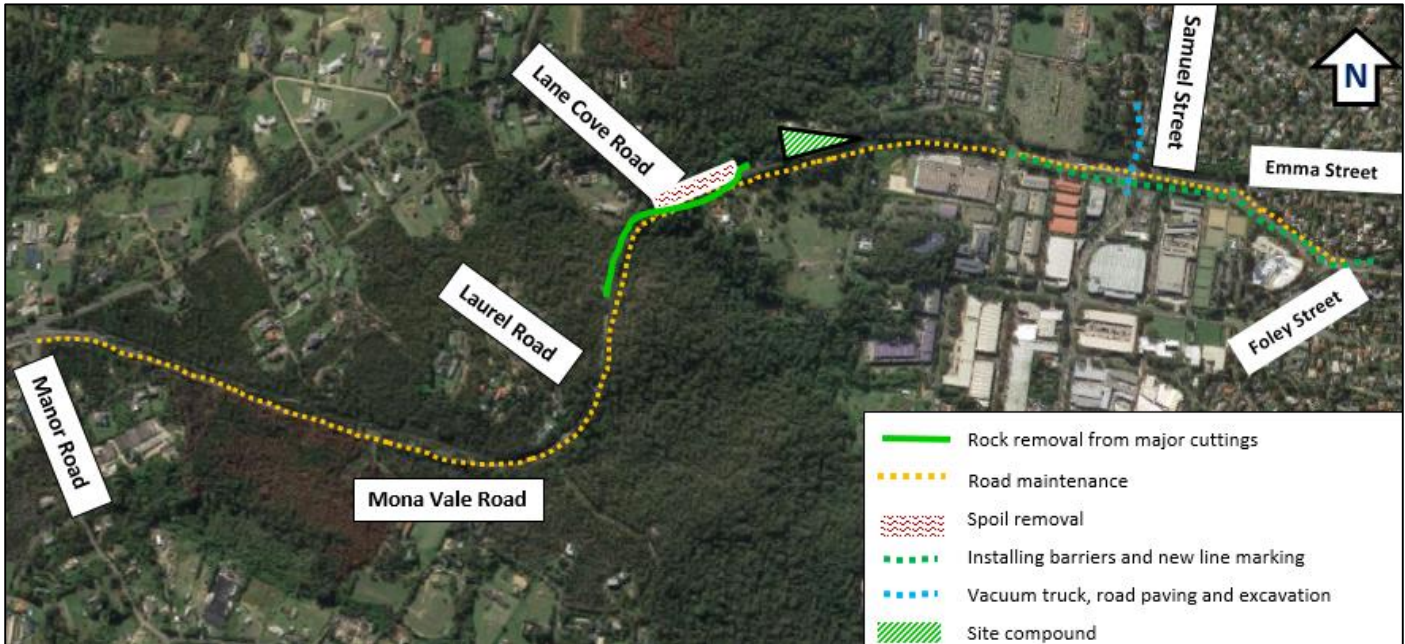
Across the project we will use excavators with rock hammers, backhoes, tipper trucks, elevated work platforms, a roller, a vibrating roller, a small crane, wacker packer, street sweepers, vacuum trucks, concrete trucks, line marking equipment, bob cat mill, light vehicles and lighting towers.

Our work along the **eastern end of the project** includes:

- using a vacuum truck, road saw, jack hammers and an excavator to trench and install utilities under the Mona Vale Road, Samuel Street and Ponderosa Parade roundabout and about 40 metres up Samuel Street
- paving the road around the Mona Vale Road, Samuel Street and Ponderosa Parade roundabout
- placing concrete barriers and replacing the line marking along Mona Vale Road from near the Mona Vale Cemetery to near Foley Street
- ongoing road maintenance.

As per our September update, the NSW Government introduced new rules allowing public infrastructure projects to operate on **weekends and public holidays from 7am to 6pm**. Any high noise generating work is not allowed after 1pm.

We will be working on **Saturday 3 and Sunday 4 October**. This work includes the pulling of electrical cables beside Mona Vale Road from Samuel Street to near Emma Street.



Note: Shaded areas are approximations for general information and illustrative purposes only

Use of drone

A drone will be used to take progress photos and assist with survey work. The drone will stay within the project area.

For more information call us on 1800 413 640, email monavaleroad@georgiou.com.au or visit rms.work/mvrest.

If you need help understanding this information, please contact the Translating and Interpreting Service on 131 450.