

Mona Vale Road East - Out of hours work

Out of hours work is planned from **8pm to 6am** for the next fortnight on the dates below, weather permitting.

If work is delayed due to wet weather, we will try and work a different night that same week. We will notify highly impacted residents if there is a change of date.

Work along the **western end of the project** will occur on:

- **Tuesday 1, Thursday 3, Friday 4 September**
- **Monday 7, Tuesday 8, Thursday 10 and Friday 11 September**

Our work includes:

- removing rock from the top of the existing rock cutting near the eastern end of Lane Cove Road
- placing concrete barriers and reinstating the guard rail on Mona Vale Road near Manor Road
- replacing the line marking along the length of Mona Vale Road
- reinstating the kerb and median near Manor Road
- ongoing road maintenance including smoothing out the road surface.

Work along the **eastern end of the project** will occur on:

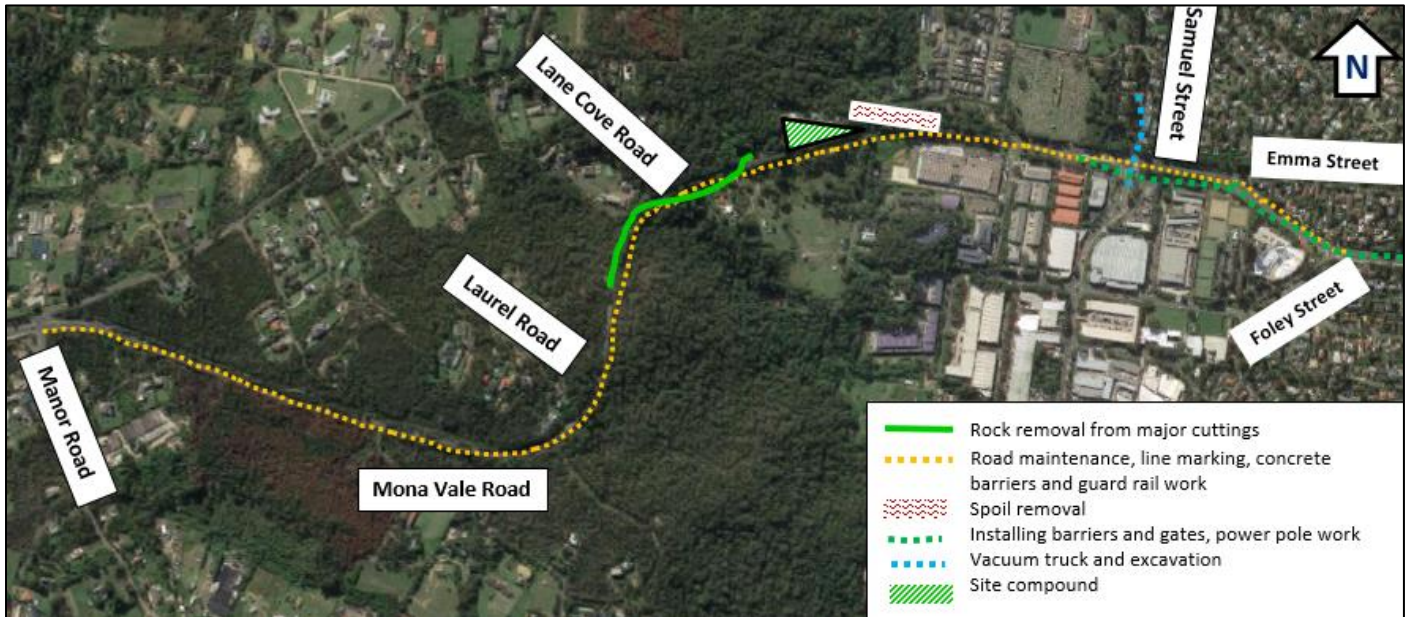
- **Tuesday 1 and Thursday 3 September**
- **Tuesday 8, Thursday 10 and Friday 11 September**

Our work includes:

- using a vacuum truck, road saw, jack hammers and an excavator to trench and install utilities under the Mona Vale Road, Samuel Street and Ponderosa Parade roundabout and about 40 metres up Samuel Street
- hauling material away from our work zone next to Walana Crescent and Wallaby Circuit
- placing concrete barriers along Mona Vale Road near Foley Street
- delivering concrete poles to our work zones on Mona Vale Road near Wallaby Circuit, Emma Street and the Pittwater RSL
- moving gates on Mona Vale Road near Emma Street and Ponderosa Parade
- ongoing road maintenance.

Across the project we will use excavators with rock hammers, backhoes, tipper trucks, elevated work platforms, a roller, saws, a crane, wacker packer, jack hammers, hammer drills, street sweepers, vacuum trucks, concrete trucks, line marking equipment, light vehicles and lighting towers.

Map showing location of out of hours work



Note: Shaded areas are approximations for general information and illustrative purposes only

Use of drone

A drone will be used to take progress photos and assist with survey work. The drone will stay within the project area.

For more information call us on 1800 413 640, email monavaleroad@georgiou.com.au or visit rms.work/mvrest.

If you need help understanding this information, please contact the Translating and Interpreting Service on 131 450.