

Mona Vale Road East - Out of hours work

Out of hours work is planned between Kimbriki Road and Tumburra Street, Ingleside from **8pm to 5am** on **Tuesday 7 July**.

If work is delayed due to wet weather, we will try and work a different night in the same week. We will notify highly impacted residents if there is a change of date.

Work in the area includes:

- removing rocks from the buffer zone near Mona Vale Road, about 150 metres west of Tumburra Street
- moving spoil near the access gate on Mona Vale Road with an excavator and roller
- relocating barriers.

Visit our pop-up information stall at Pittwater Plaza on Friday 3 July from 10.30am to 1.00pm. We will be inside, near the main entrance from Park Street. This is an opportunity to ask questions and provide feedback.

We will use excavators with rock hammers, backhoes, tipper trucks, street sweepers, and a roller. A stop/slow arrangement will be in place traffic controllers and signage directing traffic.

If you are eligible for Alternative Accommodation you will be advised within 24 hours of the work.

Enquiries and registering for work updates

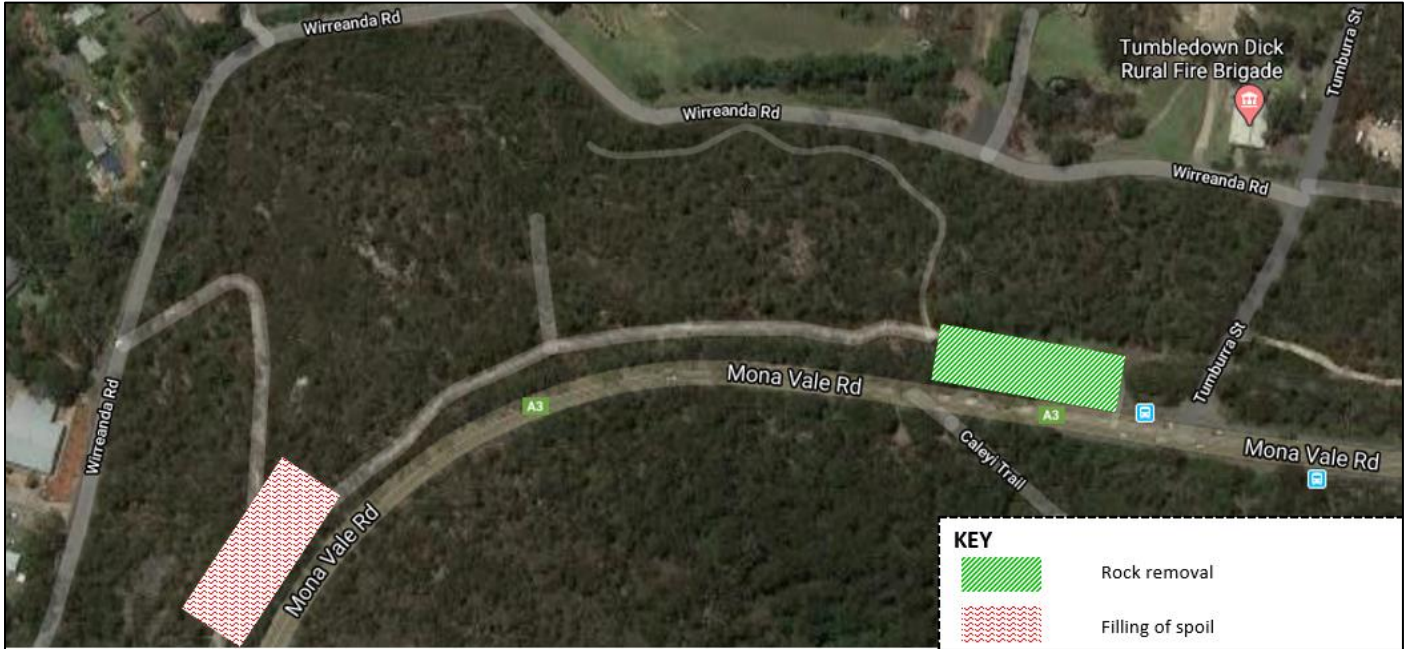
Call: 1800 413 640 (24 hour number).

Email: monavaleroad@georgiou.com.au

For more information: rms.work/mvreast

If you need help understanding this information, please contact the Translating and Interpreting Service on 131 450 and ask them to call us on 1800 413 640.

Map showing location of out of hours work



Note: Shaded areas are approximations for general information and illustrative purposes only

Use of drone

A drone will be used to take progress photos and assist with survey work. The drone will stay within the project area.