

Mona Vale Road East - Out of hours work

Out of hours work will continue along Mona Vale Road and at the Samuel Street, Ponderosa Parade and Mona Vale Road roundabout. We will work between **8pm** and **5am** on the following dates, weather permitting:

Tuesday 18, Wednesday 19 and Friday 21 February

Tuesday 25, Wednesday 26 and Friday 28 February

If work is delayed due to wet weather, we will try and work a different night within the same week. We will notify residents living closest to the work if the dates change from the above.

At the Samuel Street, Ponderosa Parade and Mona Vale Road roundabout we will:

- hammer and excavate the concrete islands located around the roundabout
- remove the inside raised kerb and vegetation within the roundabout - the roundabout will function as normal
- saw cut and trench across the road to do utility work
- investigate existing utilities and take sample cores of existing road
- deliver materials for construction work.

Between Manor Road and Mona Vale Cemetery we will:

- remove rock material from the top of the existing rock cuttings
- install temporary concrete barriers and screening
- install temporary support for future drainage work
- continue ongoing road maintenance.

We will use excavators with buckets and hammers, coring machine, bobcats, saw cutters, grinder, sweepers, lighting, rollers and light vehicles. A stop/slow arrangement will be in place with traffic controllers and signage directing traffic.

To minimise the impact of night work on residents, we do not work for more than two consecutive nights in the same area and will work only 10 days within the same month. If you are eligible for Alternative Accommodation you will be advised within 24 hours of the work.

Enquiries and registering for work updates

Please contact the community team for enquiries, feedback or any concerns you may have about the work.

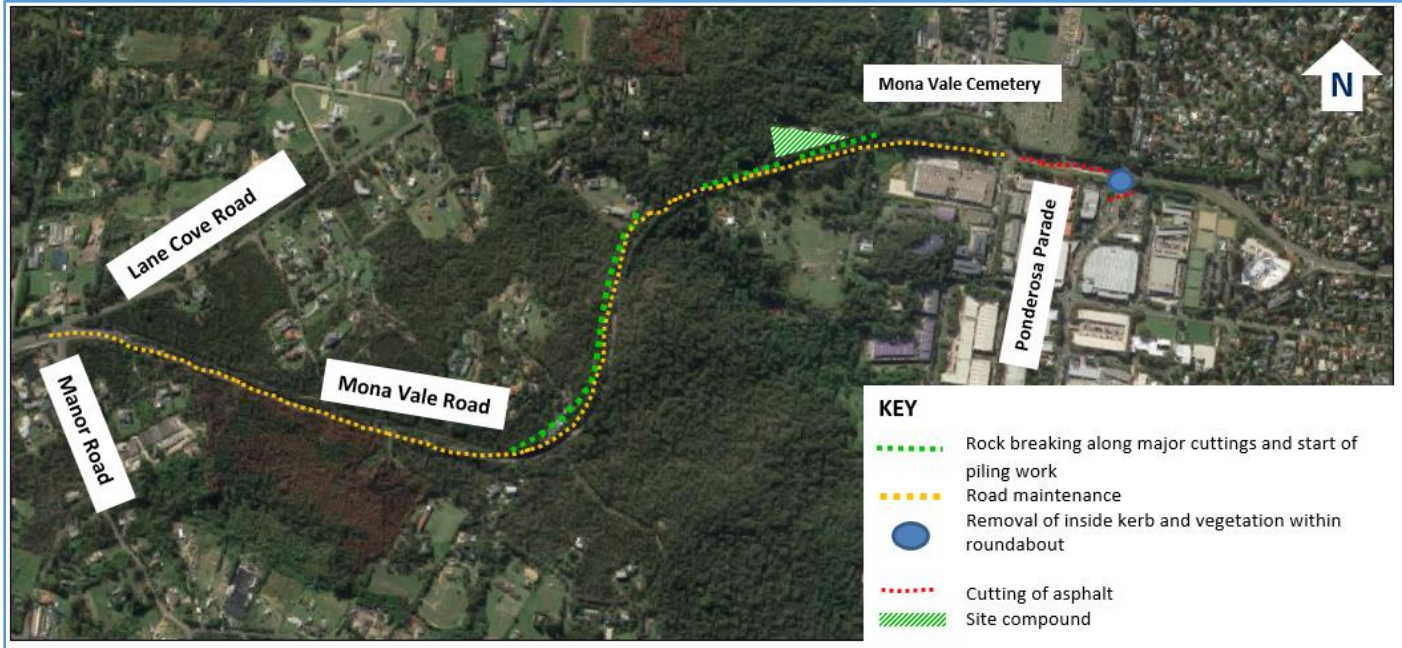
Call: 1800 413 640 (24 hour number).

Email: monavaleroad@georgiou.com.au

For more information: [rms.work/mvreast](https://www.rms.nsw.gov.au/work/mvreast)

If you need help understanding this information, please contact the Translating and Interpreting Service on 131 450 and ask them to call us on 1800 413 640.

Map showing location of out of hours work in Mona Vale Road East



Note: Shaded areas are approximations for general information and illustrative purposes only

Use of drone

A drone will be used during the last week of each month to take progress photos and assist with surveying the project. The drone will remain within the project area.