

Mona Vale Road East - Out of hours work

December 2020

Out of hours work is planned from **8pm to 6am** on the below dates, weather permitting. If work is delayed due to wet weather, we will try to work a different night that same week. We will notify highly impacted residents if there is a change of date. If you are eligible for alternative accommodation, we will contact you at least 24 hours prior to the work.

Work along the **eastern end of the project** (from Mona Vale Cemetery to Foley Street, will occur on:

- **Tuesday 1, Thursday 3 and Friday 4 December**
- **Tuesday 8, Thursday 10 and Friday 11 December**

Our work includes:

- digging trenches along Samuel Street from the Mona Vale Road/Ponderosa Parade roundabout to Fazzolari Avenue
- digging trenches across Mona Vale Road near Emma Street
- saw cutting – electrical work Emma Street
- Ongoing road maintenance
(Refer to Mona Vale Road East Upgrade map overleaf)

Work along the **western end of the project** (from Manor Road to Mona Vale Cemetery) will occur on:

- **Tuesday 1, Thursday 3 and Friday 4 December**
- **Tuesday 8, Thursday 10 and Friday 11 December**

Our work includes:

- removing rock from the existing rock cuttings near the eastern end of Lane Cove Road (cut 4)
- removing rock from existing rock cuttings adjacent to Mona Vale Road (cut 4)
- hauling material away from our work zones near the eastern end of Lane Cove Road (cut 4) and near our site compound (cut 5) to the Western Early Works site (explained in more detail below)
- on-going road maintenance.
(Refer to Mona Vale Road East Upgrade map overleaf)

Work at our **Western Early Work site** off Tumburra Street, Ingleside (up to three nights a week with a maximum of two consecutive nights) includes:

- tipping spoil collected from the rock cuttings and stockpile management
(Refer to Western Early Work map overleaf)

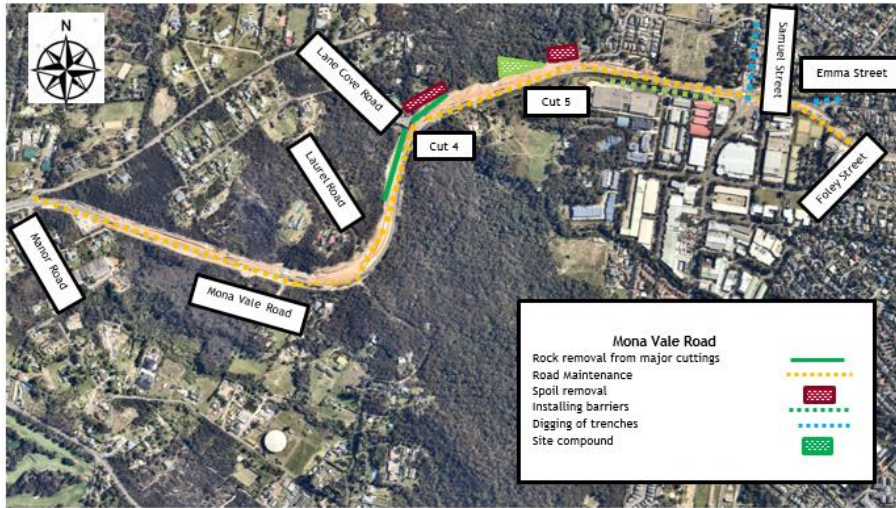
During our night work we will use excavators with rock hammers, large bulldozers, backhoes, tipper trucks, elevated work platforms, a roller, a paver, a profiler, street sweepers, a compactor and wacker packers, small cranes, vacuum trucks, concrete trucks, a saw cutting machine, large trucks, light vehicles and lighting towers.

The trial of night work over four nights a week has concluded. We will continue to work three nights a week.

For more information call us on 1800 413 640, email monavaleroad@georgiou.com.au or visit rms.work/mvrest. If you need help understanding this information, please contact the Translating and Interpreting Service on 131 450.

Maps showing location of out of hours work

Mona Vale Road East Upgrade



Western Early Work



Use of drone – a drone will be used monthly to take progress photos and assist with survey work. The drone will stay within the project area.
 Note: Shaded areas are approximations for general information and illustrative purposes only.