

Mona Vale Road East - Out of hours work

Out of hours work is planned from **8pm to 6am** on the below dates, weather permitting. If work is delayed due to wet weather, we will try and work a different night that same week. We will notify highly impacted residents if there is a change of date.

Work along the **eastern end of the project** (from Mona Vale Cemetery to Foley Street, will occur on:

- **Tuesday 20, Thursday 22 and Friday 23 October**
- **Tuesday 27, Thursday 28 and Friday 29 October**

Our work includes:

- digging trenches along Samuel Street from the Mona Vale Road/Ponderosa Parade roundabout to Fazzolari Avenue
- removing of asphalt at the Mona Vale Road/Ponderosa Parade roundabout
- installing/moving of barriers along the section of road from the roundabout to Foley Street
- ongoing road maintenance.

(Refer to Mona Vale Road East Upgrade map overleaf)

Work along the **western end of the project** (from Manor Road to Mona Vale Cemetery) will occur on:

- **Monday 19, Tuesday 20, Thursday 22 and Friday 23 October**
- **Monday 26, Tuesday 27, Thursday 28 and Friday 29 October**

Our work includes:

- removing rock from the existing rock cuttings near the end of Laurel Road (cut 3), Lane Cove Road (cut 4) and Walana Crescent (cut 5)
- excavating and constructing stormwater drainage in the area east of the site compound

- hauling material away from our work zones at cut 3, 4, and 5 to the Western Early Works site
- ongoing road maintenance.

(Refer to Mona Vale Road East Upgrade map overleaf)

Work at our **Western Early Work site** off Tumburra Street, Ingleside includes:

- tipping spoil collected from the western end work sites and then spreading and compacting it in this area
- removing rock from the cutting next to Mona Vale Road.

(Refer to Western Early Work map overleaf)

During our night work we will use excavators with rock hammers, large bulldozers, backhoes, tipper trucks, elevated work platforms, a roller, a paver, a profiler, street sweepers, vacuum trucks, light vehicles and lighting towers.

The Environment Protection Agency has approved a trial of increased night work, to four nights a week, over a six week period for the western end of the project. This is necessary to remove the remaining rock along Mona Vale Road. The trial began on Monday 12 October.

We will contact highly and moderately impacted residents during the trial to seek your feedback and agreement for the four nights per week to continue beyond the six week trial.

For more information call us on 1800 413 640, email monavaleroad@georgiou.com.au or visit rms.work/mvrest.

If you need help understanding this information, please contact the Translating and Interpreting Service on 131 450.

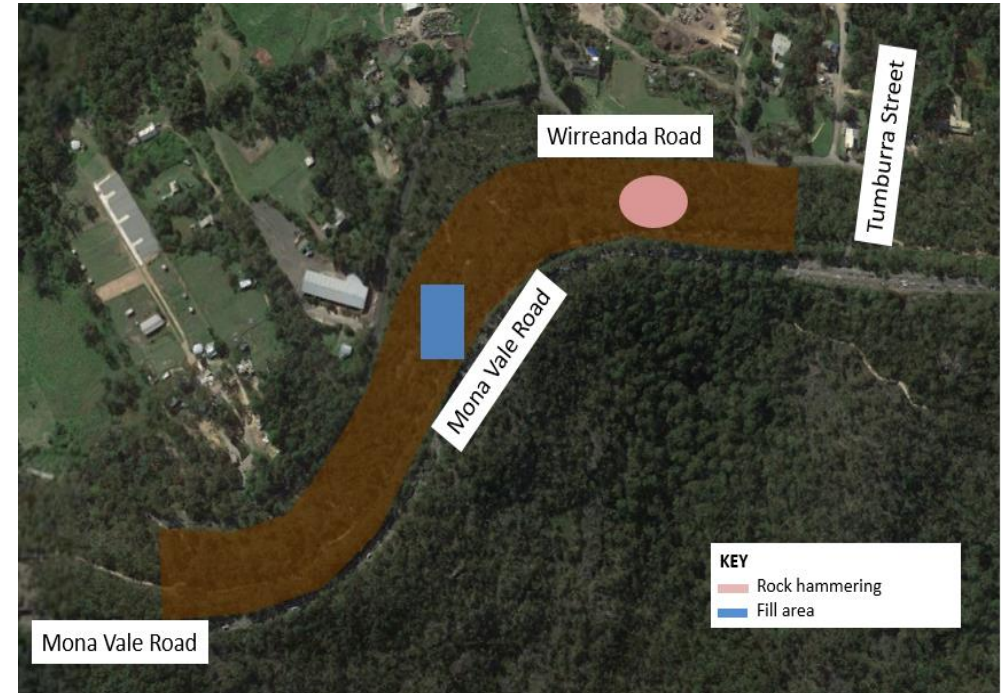
Maps showing location of out of hours work



Mona Vale Road East Upgrade

Note: Shaded areas are approximations for general information and illustrative purposes only

Use of drone - A drone will be used monthly to take progress photos and assist with survey work. The drone will stay within the project area.



Western Early Work

Note: Shaded areas are approximations for general information and illustrative purposes only