

Mona Vale Road East - Out of hours work

Out of hours work is planned from **8pm to 5am** on the following dates, weather permitting:

Tuesday 17, Wednesday 18 and Friday 20 March

Tuesday 24, Wednesday 25 and Friday 27 March

If work is delayed due to wet weather, we will try and work a different night within the same week. We will notify residents living closest to the work if there is a change of date.

Our work work along Mona Vale Road and the northern end of Ponderosa Parade includes:

- excavating and installing new utilities and stormwater drainage along Ponderosa Parade between Mona Vale Road and KFC.
- closing Ponderosa Parade at Mona Vale Road from 10pm until 5am. Access to and from Ponderosa Parade south of the closure will be via Foley Street.
- excavating for new utilities along Mona Vale Road between the Samuel Street/Ponderosa Road roundabout and near the Mona Vale Cemetery.
- taking excess material to our work zone off Tumburra Street, Ingleside.

Between Manor Road and Mona Vale Cemetery we will:

- remove rock material from the top of the existing rock cuttings
- install/relocate barriers and screening along roadway
- continue ongoing road maintenance.

We will use excavators, tipper trucks, backhoes, coring machine, road saws, street sweepers, light towers and rollers. A stop/slow arrangement will be in place with traffic controllers and signage directing traffic.

To minimise the impact of night work on residents, we do not work for more than two consecutive nights in the same area and will work only 10 days within the same month. If you are eligible for Alternative Accommodation you will be advised within 24 hours of the work.

Enquiries and registering for work updates

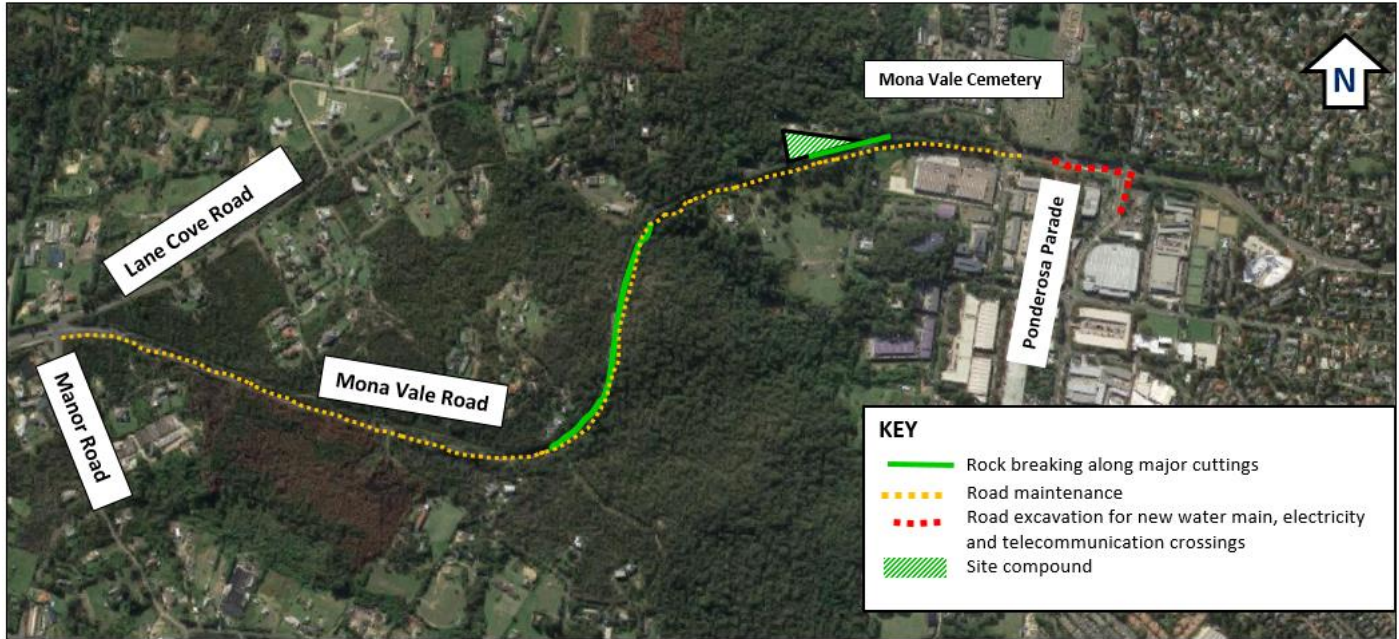
Call: 1800 413 640 (24 hour number).

Email: monavaleroad@georgiou.com.au

For more information: [rms.work/mv-reast](https://www.rms.nsw.gov.au/work/mv-reast)

If you need help understanding this information, please contact the Translating and Interpreting Service on 131 450 and ask them to call us on 1800 413 640.

Map showing location of out of hours work in Mona Vale Road East



Note: Shaded areas are approximations for general information and illustrative purposes only

Use of drone

A drone will be used during the last week of each month to take progress photos and assist with surveying the project. The drone will remain within the project area.