

## Mona Vale Road East - Out of hours work

March 2020

Out of hours work is planned from **8pm to 5am** on the following dates, weather permitting:

- **Tuesday 31 March, Wednesday 1 April and Friday 3 April**
- **Monday 6, Tuesday 7 and Thursday 9 April**

If work is delayed due to wet weather, we will try and work a different night within the same week. We will notify residents living closest to the work if there is a change of date.

Our work along Mona Vale Road and the northern end of Ponderosa Parade includes:

- Excavating and installing new utilities along Ponderosa Parade between Mona Vale Road and KFC.
- Excavating and installing new utilities along Mona Vale Road between the Samuel Street/Ponderosa Road roundabout and near the Mona Vale Cemetery.
- Potholing investigations and excavating for new utilities along Mona Vale Road between the Samuel Street/Ponderosa Road roundabout and Foley Street.
- Line marking along Tumburra Street.

Between Manor Road and Foley Street we will:

- remove rock material from the top of the existing rock cuttings (near our site compound and Laurel Road)
- install/relocate barriers and screening along roadway
- continue ongoing road maintenance.

We will use excavators with rock hammers, tipper trucks, backhoes, hammer drills, vacuum trucks, road saws, street sweepers and light towers. A stop/slow arrangement will be in place with traffic controllers and signage directing traffic.

To minimise the impact of night work on residents, we do not work for more than two consecutive nights in the same area and will work only 10 days within the same month. If you are eligible for Alternative Accommodation you will be advised within 24 hours of the work.

### Enquiries and registering for work updates

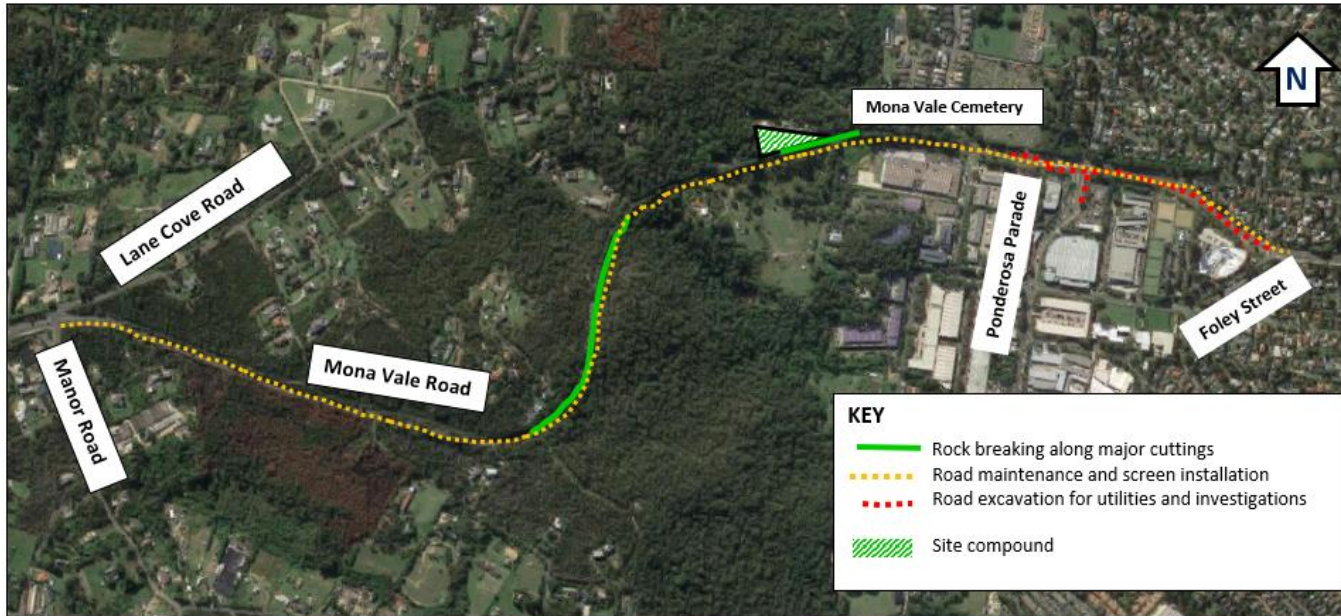
**Call:** 1800 413 640 (24 hour number).

**Email:** [monavaleroad@georgiou.com.au](mailto:monavaleroad@georgiou.com.au)

**For more information:** rms.work/mvreast

*If you need help understanding this information, please contact the Translating and Interpreting Service on 131 450 and ask them to call us on 1800 413 640.*

## Map showing location of out of hours work in Mona Vale Road East



Note: Shaded areas are approximations for general information and illustrative purposes only

### Use of drone

A drone will be used during the last week of each month to take progress photos and assist with surveying the project. The drone will remain within the project area.