

## Mona Vale Road East - Change of location for out of hours work

October 2019

We have changed where we will be working during our night shifts along Mona Vale Road. The new location is shown on the map overleaf. We will be working from 8pm to 5am, weather permitting on:

- **Tuesday 15 October**
- **Wednesday 16 October**
- **Friday 18 October.**

Our work will include:

- removing loose rock from the cuttings along the road
- potholing around existing utilities east of Foley Street on **Friday night** to avoid impacting HSC students living in the area.

We will minimise noise where possible. We will use excavators with buckets and hammers, bobcats, rollers, grinders, cranes, lighting, hand tools and trucks.

To minimise the impact of night work on residents, we do not work for more than two consecutive nights in the same area. If you are eligible for Alternative Accommodation you will be advised within 24 hours of the work.

We will close one lane of Mona Vale Road in the night and reduce the speed limit to 40km/h to ensure the safety of motorists and workers. A stop/slow arrangement will be in place with traffic controllers and signage directing traffic.

### Enquiries and registering for work updates

Please contact the community team for enquiries, feedback or any concerns you may have about the work.

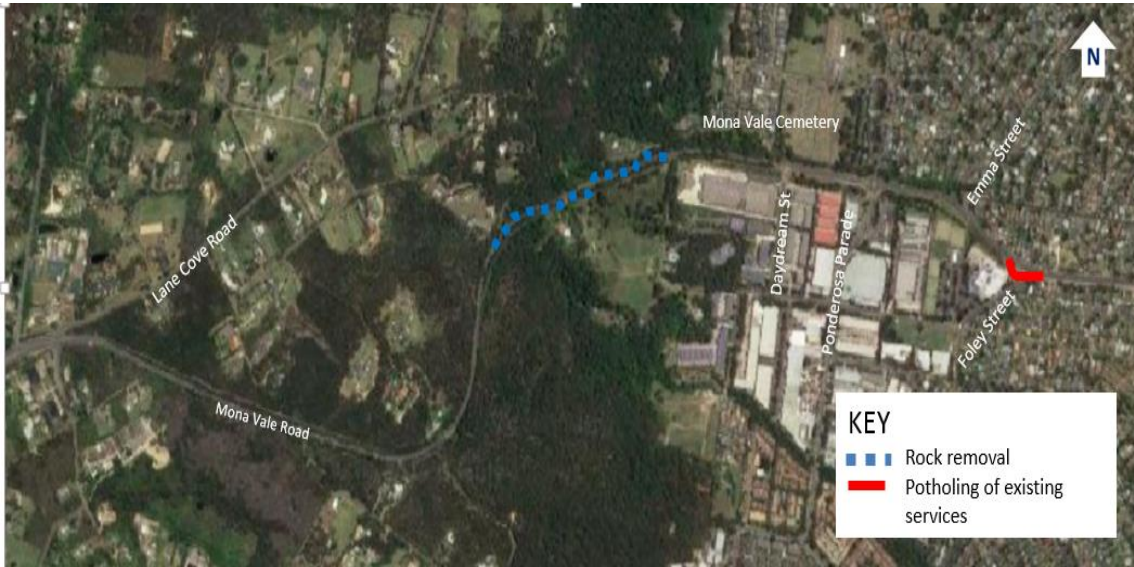
**Call:** 1800 413 640 (24 hour number).

**Email:** [monavaleroad@georgiou.com.au](mailto:monavaleroad@georgiou.com.au)

For more information about the project, visit [rms.work/mvreast](https://rms.work/mvreast)

If you need help understanding this information, please contact the Translating and Interpreting Service on 131450 and ask them to call us on 1800 413 640.

## Map showing location of out of hours work



Note: Shaded areas are approximations for general information and illustrative purposes only