

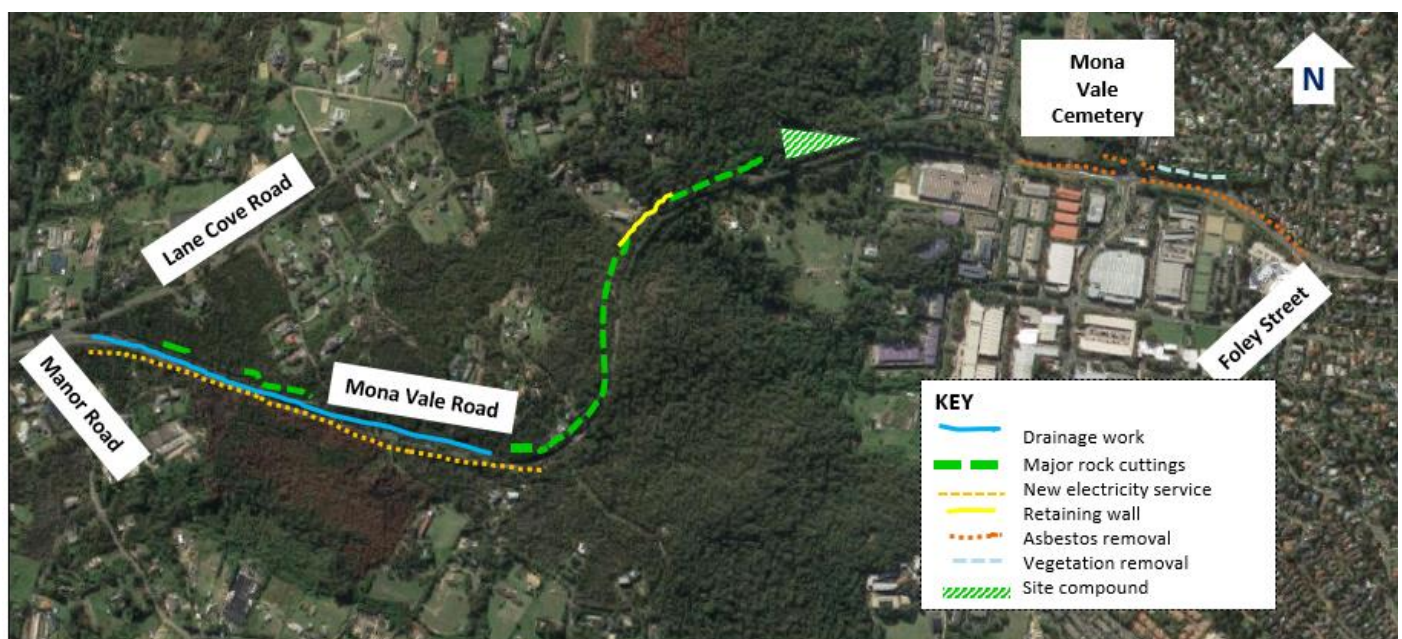
Mona Vale Road East upgrade project

Construction update – November 2019

The NSW Government is investing \$140 million to upgrade Mona Vale Road between Manor Road, Ingleside, and Foley Street, Mona Vale, from two to four lanes to improve safety and traffic efficiency.

Work has now started in all areas along Mona Vale Road between Manor Road, Ingleside, and Foley Street, Mona Vale.

Map of activities in Mona Vale Road East upgrade



Note: Shaded areas are not to scale and for general information and illustrative purposes only

Work between Manor Road and Mona Vale Cemetery

We have moved into the earthwork stage along Mona Vale Road between Manor Road and Mona Vale Cemetery. We expect to complete earthwork in late 2020, weather permitting.

Earthworks include removing top soil, scaling and breaking rock between Manor Road and Mona Vale Cemetery.

The cutting of the rock faces and filling of the gullies along the road corridor will widen and bring the adjacent ground levels to meet the level of the existing roadway. We are also relocating utilities and installing new drainage.

During the earthwork stage we will:

- remove about 210,000 cubic metres of sandstone and soil
- install over 140 rock anchors and shotcrete (spray concrete) to stabilise the excavated rock faces.

Activities to the end of 2019 include:

- continuing rock breaking along Mona Vale Road between the descending section and the site compound
- erecting electrical poles and connecting the new electricity service along the southern side of Mona Vale Road

- constructing permanent retaining structures and commencement of the fauna bridge overpass abutment
- installing new stormwater and the start of major filling at the Western Early Works area, between Kimbriki Road and Tumburra Street, using the excess material from the Mona Vale Road East project
- continuing installation of permanent fauna fencing along Mona Vale Road to protect fauna crossing the road.

Work between Mona Vale Cemetery and Foley Street

The following activities started at the eastern end of the project in mid-October and will continue to the end of the year:

- survey and confirming locations of existing utility assets
- clearing vegetation on the southern side of Mona Vale Road. Some clearing is still required near the Cemetery and near Emma Street on both sides of Mona Vale Road
- removing asbestos contaminated soils and buried construction debris in areas between Mona Vale Cemetery and Foley Street
- relocating signs and adjusting private property assets for some commercial properties in the area
- retaining work near Ponderosa Parade.

Pedestrians and cyclists

For safety reasons, pedestrians and off-road cyclists are advised to avoid Mona Vale Road between Daydream Street, Mona Vale, and Manor Road, Ingleside. There is no footpath or cycle way

and the road shoulders are not available during construction.

We apologise for any inconvenience and thank you for your patience and understanding.

Construction Speed Zone

We have implemented a 40km/hr construction speed limit along our work corridor to maintain safety. The increased truck movements at the multiple construction access gates also require safe entry and exit speeds along the road corridor. For the safety of motorists and construction workers please follow the speed limits during our day and night work.

How will the work affect you?

There is noise, vibration and dust associated with our work. We make every effort to minimise the impact by notifying residents before work starts near their property.

During night work we direct light away from residential properties, use noise shields where possible, and turn off equipment and vehicles when not in use. Eligible residences will be offered alternative accommodation.

Our work schedule

Our standard working hours are between **7am** and **6pm Monday to Friday** and between **8am** and **1pm** on **Saturdays**. Due to daytime traffic restrictions and safety considerations, out of hours work will need to continue for some activities.

Out of hours work may happen on a Monday, Tuesday, Thursday or Friday night from 8pm to 5am with up to three shifts per week, weather permitting. The out of hours work will not be carried out for more than two consecutive nights in the same area. We will advise you before we start night work near your property.

Our last day of work for 2019 will be Friday 20 December and we will return to work on Monday 6 January 2020. We wish you all a safe and restful Christmas and New Year and thank you for your patience during 2019.

For more information

If you have any enquiries, feedback or concerns, or would like to sign up for our emailing list, please:

- Call:** 1800 413 640 (24 hour number)
Email: monavaleroad@georgiou.com.au
Website: www.rms.work/mvreast



If you need help understanding this information, please contact the Translating and Interpreting Service on 131 450 and ask them to call us on **1800 413 640**