

## Mona Vale Road East - Out of hours work update

We will continue out of hours work along Mona Vale Road to remove loose rock from the cuttings along the road. We will continue with survey work, move barriers and undertake road maintenance.

For safety reasons, we will close one lane of Mona Vale Road during the night work. During the lane closure, we will reduce the speed limit to 40km/h to ensure the safety of motorists and workers. A stop/slow arrangement will be in place with traffic controllers and signage directing traffic.

Night work is planned for **Monday, Tuesday and Thursday nights** between **Monday 16 September and Friday 27 September** from 8pm to 5am.

If we are unable to complete night work earlier in the week, we will reschedule this work for an available night later in the week. To minimise the impact of night work on residents, we will not work for more than two consecutive nights in the same area.

We will minimise noise where possible. We will be using cranes, excavators with hammers, lighting, hand tools and trucks for the work.

September 2019

### Enquiries and registering for work updates

Please contact the community team for enquiries, feedback or any concerns you may have about the work.

**Call:** 1800 413 640 (24 hour number).

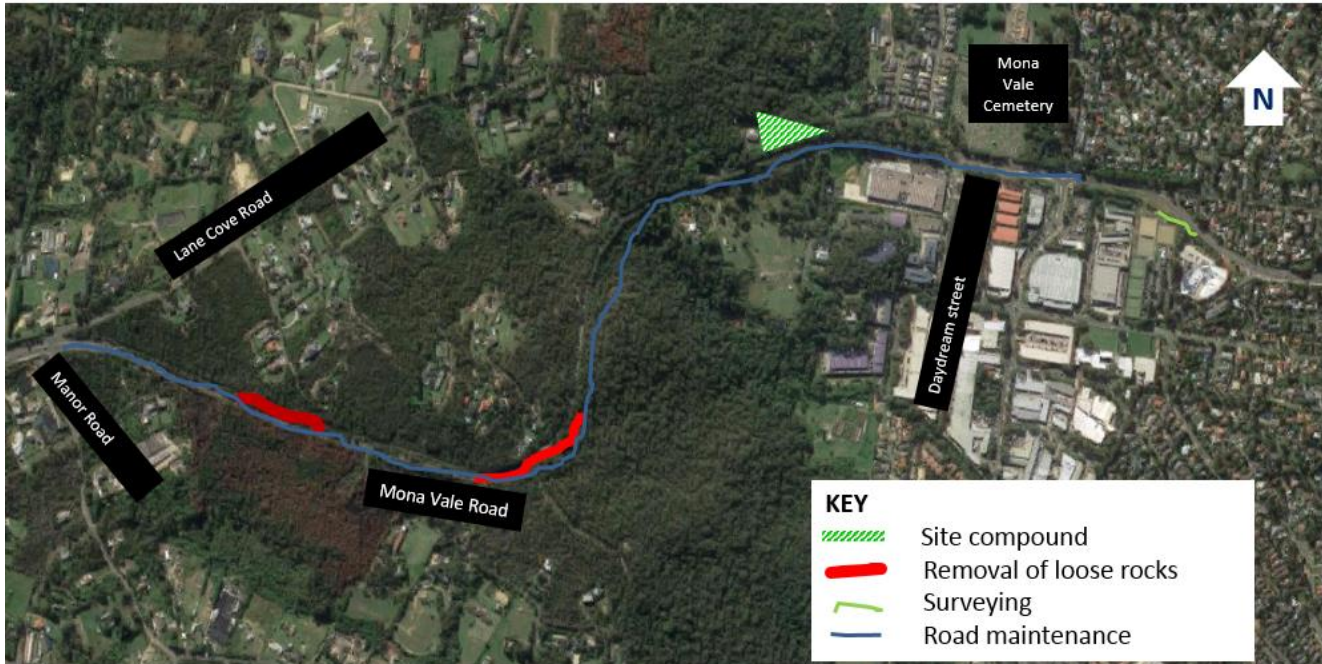
**Email:** [monavaleroad@georgiou.com.au](mailto:monavaleroad@georgiou.com.au)

For more information about the project, visit [rms.work/mvrest](https://rms.work/mvrest)

If you have not registered for updates please forward your name/s, address, preferred email and mobile number to the contact details above.

If you need help understanding this information, please contact the Translating and Interpreting Service on 131 450 and ask them to call us on 1800 413 640

## Map showing location of out of hours work



Highly affected residents will be contacted directly within 24 hours of night work to be undertaken.  
Lane closures will take place in the area where the night work occurs.