

Mona Vale Road East - out of hours work

Out of hours work will continue along Mona Vale Road over the next two weeks. We will work between **8pm** and **5am** on the following dates, weather permitting:

- **Tuesday 21, Wednesday 22 and Friday 24 January**
- **Tuesday 28, Wednesday 29 and Friday 31 January.**

If work is delayed due to wet weather, we will try and work a different night within the same week. We will notify residents living closest to the work if the dates change from the above.

Our work in the main project will include:

- rock breaking and placing rock along the cuttings closest to the road
- road maintenance
- shifting of concrete barriers.

We will use excavators with buckets and hammers, bobcats, rollers, grinders, cranes, lighting, line marking trucks and light vehicles.

We will also work at the Western Early Works area, between Kimbriki Road and Tumburra Street on **Wednesday 20 January** between **8pm** and **5am**.

Work will include moving equipment, tree clearing and line marking on the corner of Tumburra Street.

We will use chainsaws, grinders, cranes, lighting, line marking trucks and light vehicles.

During our out of hours work, we will close one lane of Mona Vale Road and reduce the speed limit to 40km/h to ensure the safety of motorists and workers. A stop/slow arrangement will be in place with traffic controllers and signage directing traffic.

To minimise the impact of night work on residents, we do not work for more than two consecutive nights in the same area and will work only 10 days within the same month. If you are eligible for Alternative Accommodation you will be advised within 24 hours of the work.

Enquiries and registering for work updates

Please contact the community team for enquiries, feedback or any concerns you may have about the work.

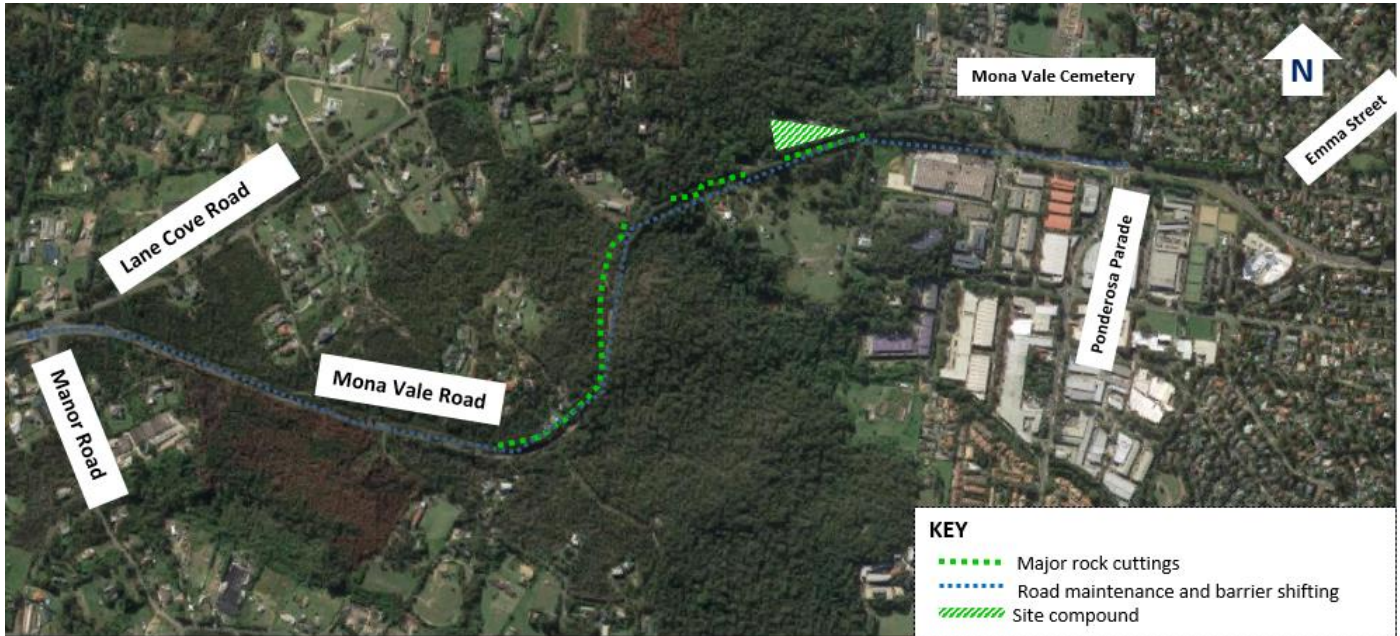
Call: 1800 413 640 (24 hour number).

Email: monavaleroad@georgiou.com.au

For more information: rms.work/mvreast

If you need help understanding this information, please contact the Translating and Interpreting Service on 131 450 and ask them to call us on 1800 413 640.

Map showing location of out of hours work in Mona Vale East



Note: Shaded areas are approximations for general information and illustrative purposes only

Use of drone

A drone will be used during the last week of each month to take progress photos and assist with surveying the project. The drone will remain within the project area.