

Mona Vale Road East - out of hours work

We are continuing with our out of hours work over the following two weeks along *Mona Vale Road East*. We will be working from 8pm to 5am, weather permitting on:

- **Tuesday 22 October**
- **Wednesday 23 October**
- **Friday 25 October**
- **Monday 28 October.**

Our work will include:

- removing the rock cuttings along the road
- potholing for services investigation
- shifting concrete road barriers and
- carrying out road maintenance work, where required.

We will use excavators with buckets and hammers, bobcats, rollers, grinders, cranes, lighting, hand tools and trucks.

Road maintenance work and the relocating of concrete barriers along *Mona Vale Road between Kimbriki Road and Tumburra Street* is planned for **Tuesday 22 October**, 8pm to 5am, weather permitting. During our night work we will minimise noise where possible. We will use cranes, lighting and trucks during the work.

October 2019

To minimise the impact of night work on residents, we do not work for more than two consecutive nights in the same area and will work only 10 days within the same month. If you are eligible for Alternative Accommodation you will be advised within 24 hours of the work.

We will close one lane of Mona Vale Road in the night and reduce the speed limit to 40km/h to ensure the safety of motorists and workers. A stop/slow arrangement will be in place with traffic controllers and signage directing traffic.

Enquiries and registering for work updates

Please contact the community team for enquiries, feedback or any concerns you may have about the work.

Call: 1800 413 640 (24 hour number).

Email: monavaleroad@georgiou.com.au

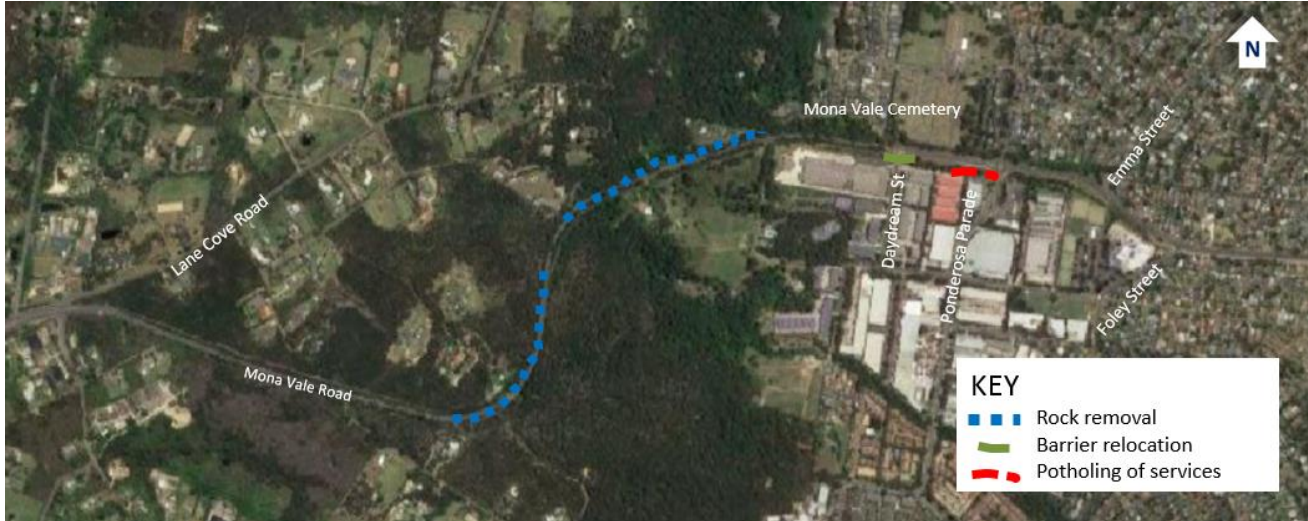
For more information: [rms.work/mvveast](https://www.rms.nsw.gov.au/work/mvveast)

If you need help understanding this information, please contact the Translating and Interpreting Service on 131450 and ask them to call us on 1800 413 640.

Use of drone

A drone will be used during the last week of each month to take progress photos and assist with surveying the project. The drone will remain within the project area.

Map showing location of out of hours work in Mona Vale East



Note: Shaded areas are approximations for general information and illustrative purposes only