

Mona Vale Road East – additional out of hours work east of Cemetery

January 2020

We have restarted out of hours work along Mona Vale Road. Next week we will work to the east of the Mona Vale Cemetery. This work is in addition to the activities outlined in the notice forwarded in early January.

Work will take place from **8pm to 5am** in the eastern section of the project on the following dates, weather permitting:

- **Tuesday 14, Wednesday 15 and Friday 17 January**

If work is delayed due to wet weather, we will try and work a different night within the same week. We will notify residents living closest to the work if the dates change from the above.

Our work will include:

- potholing (surveying utilities) along Mona Vale Road near Foley Street
- tree clearing near Emma Street.

During our out of hours work, we will close one lane of Mona Vale Road and reduce the speed limit to 40km/h to ensure the safety of motorists and workers.

A stop/slow arrangement will be in place with traffic controllers and signage directing traffic.

We will use vacuum trucks, chainsaws, lighting and light vehicles.

To minimise the impact of night work on residents, we do not work for more than two consecutive nights in the same area and will work only 10 days within the same month.

If you are eligible for Alternative Accommodation you will be advised within 24 hours of the work.

Enquiries and registering for work updates

Please contact the community team for enquiries, feedback or any concerns you may have about the work.

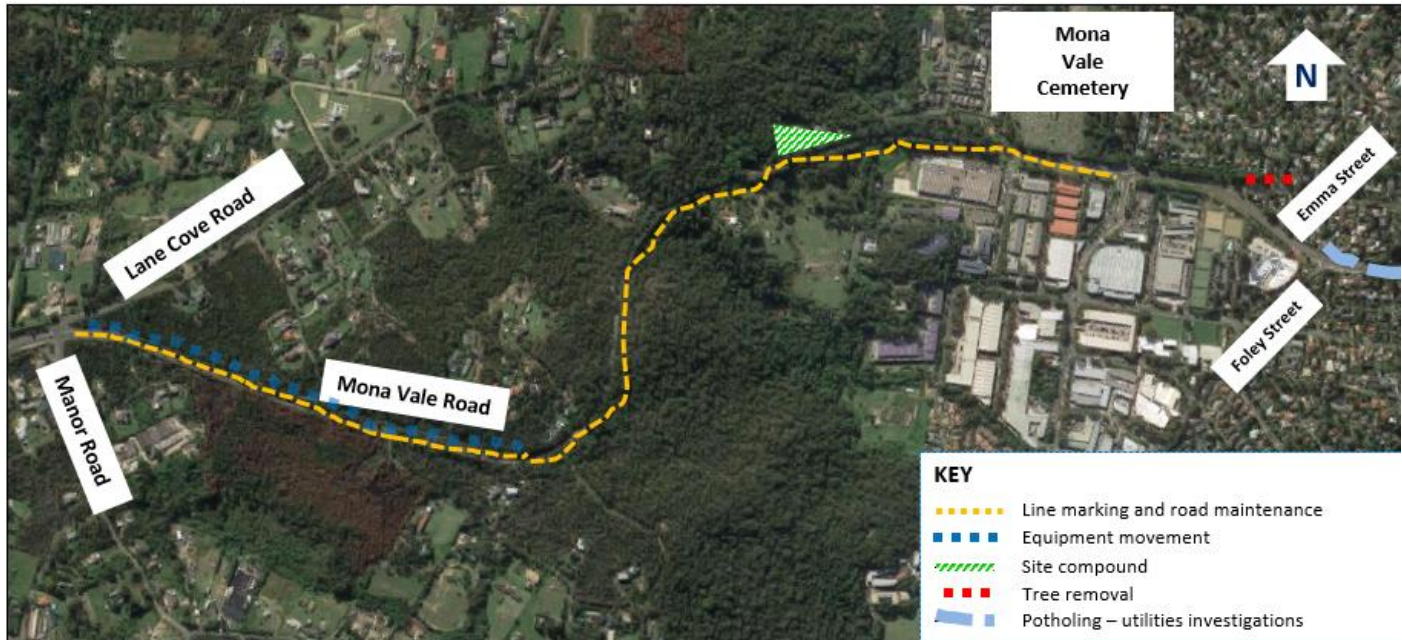
Call: 1800 413 640 (24 hour number).

Email: monavaleroad@georgiou.com.au

For more information: [rms.work/mvreast](https://www.rms.nsw.gov.au/work/mvreast)

If you need help understanding this information, please contact the Translating and Interpreting Service on 131 450 and ask them to call us on 1800 413 640.

Map showing location of additional out of hours work in Mona Vale East



Note: Shaded areas are approximations for general information and illustrative purposes only