

Mona Vale Road East - out of hours work

We will continue out of hours work along Mona Vale Road from **8pm** to **5am** on the following dates, weather permitting:

- **Monday 9, Tuesday 10 and Thursday 12 December**
- **Monday 16, Tuesday 17 and Thursday 19 December.**

If work is delayed due to wet weather, we will try and work a different night within the same week. We will notify residents living closest to the work if the dates change from the above.

Our work will include:

- excavating rock
- Optus cabling work
- road maintenance, where required
- barrier relocation, from Manor Road to Mona Vale Cemetery
- finalising tree clearing near Emma Street
- signage installation near Ponderosa Parade.

During our out of hours work, we will close one lane of Mona Vale Road and reduce the speed limit to 40km/h to ensure the safety of motorists and workers.

A stop/slow arrangement will be in place with traffic controllers and signage directing traffic.

We will use large excavators with buckets and hammers, bobcats, rollers, grinders, cranes, lighting, chainsaws, paving equipment, light vehicles, hand tools and trucks.

To minimise the impact of night work on residents, we do not work for more than two consecutive nights in the same area and will work only 10 days within the same month.

If you are eligible for Alternative Accommodation you will be advised within 24 hours of the work.

Enquiries and registering for work updates

Please contact the community team for enquiries, feedback or any concerns you may have about the work.

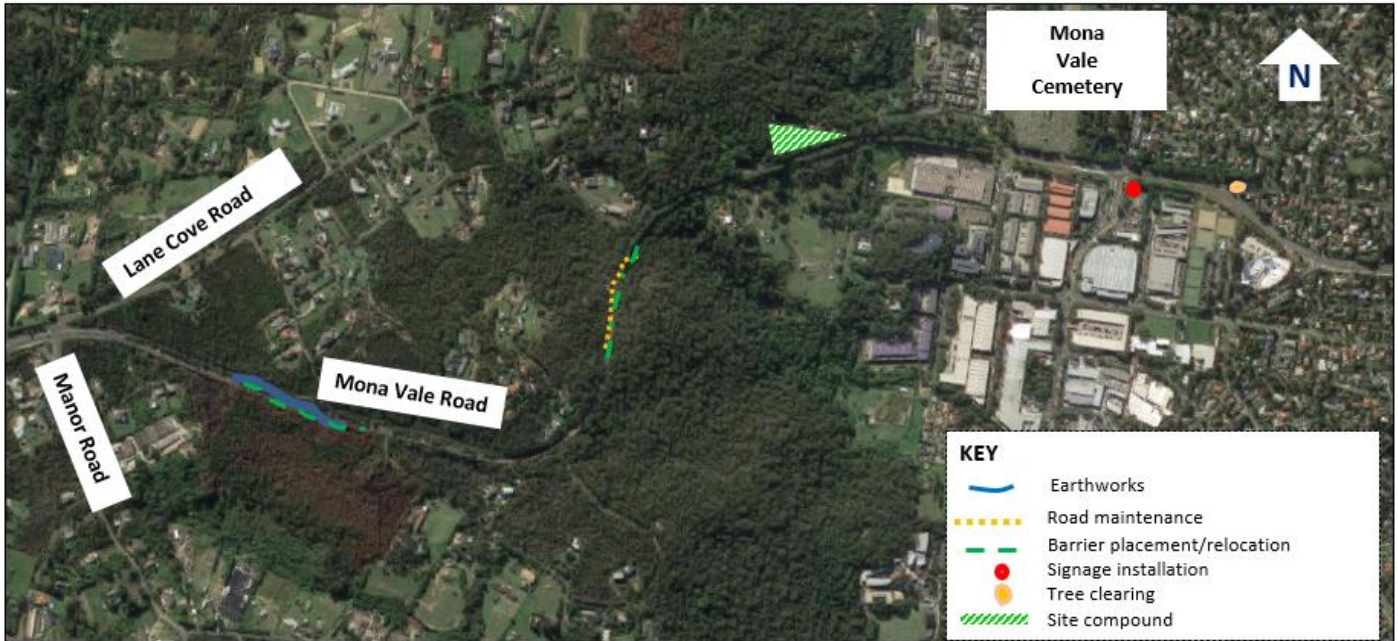
Call: 1800 413 640 (24 hour number).

Email: monavaleroad@georgiou.com.au

For more information: rms.work/mvreast

If you need help understanding this information, please contact the Translating and Interpreting Service on 131 450 and ask them to call us on 1800 413 640.

Map showing location of out of hours work in Mona Vale East



Note: Shaded areas are approximations for general information and illustrative purposes only