

Mona Vale Road East - out of hours work

Out of hours work will continue along Mona Vale Road over the next two weeks. We will work between **8pm** and **5am** on the following dates, weather permitting:

- **Tuesday 4, Wednesday 5 and Friday 7 February**
- **Tuesday 11, Wednesday 12 and Friday 14 February.**

If work is delayed due to wet weather, we will try and work a different night within the same week. We will notify residents living closest to the work if the dates change from the above.

Our work in the main project area between Manor Road and Mona Vale Cemetery will include:

- rock breaking along the cuttings closest to the road
- drilling into rock so we can insert steel piles for retaining walls
- concrete delivery for construction work
- shifting of barriers to create one lane into Ponderosa Parade from Mona Vale Road
- road maintenance.

We will use excavators with buckets and hammers, bobcats, piling rigs, cranes, lighting, rollers and light

vehicles. A stop/slow arrangement will be in place with traffic controllers and signage directing traffic.

We will also work at the Western Early Works area, between Kimbriki Road and Tumburra Street between 8pm and 5am on the following dates, weather permitting:

- **Tuesday 4 and Wednesday 5 February.**

Work will include machine delivery and line removal and line marking on the corner of Tumburra Street. We will use grinders, water blaster, line marking trucks, lighting and light vehicles.

Enquiries and registering for work updates

Please contact the community team for enquiries, feedback or any concerns you may have about the work.

Call: 1800 413 640 (24 hour number).

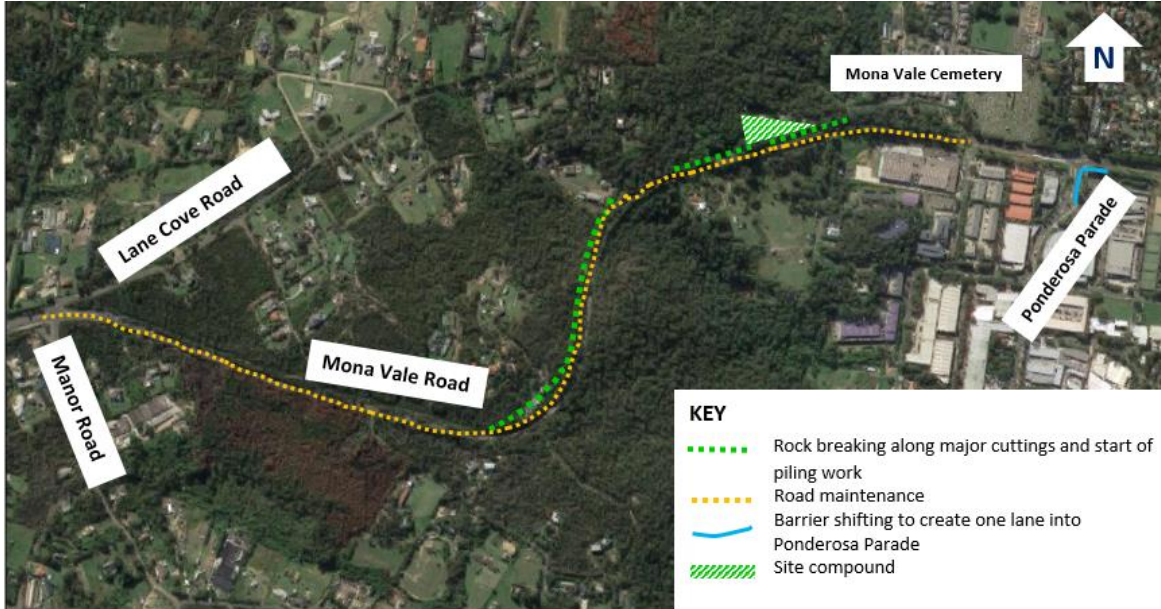
Email: monavaleroad@georgiou.com.au

For more information: [rms.work/mvreast](https://www.rms.work/mvreast)

**Or visit us out our pop-up information stall at Pittwater Plaza
13 February from 10.30 – 2.00.**

If you need help understanding this information, please contact the Translating and Interpreting Service on 131 450 and ask them to call us on 1800 413 640.

Map showing location of out of hours work in Mona Vale East



Note: Shaded areas are approximations for general information and illustrative purposes only

To minimise the impact of night work on residents, we do not work for more than two consecutive nights in the same area and will work only 10 days within the same month. If you are eligible for Alternative Accommodation you will be advised within 24 hours of the work.