

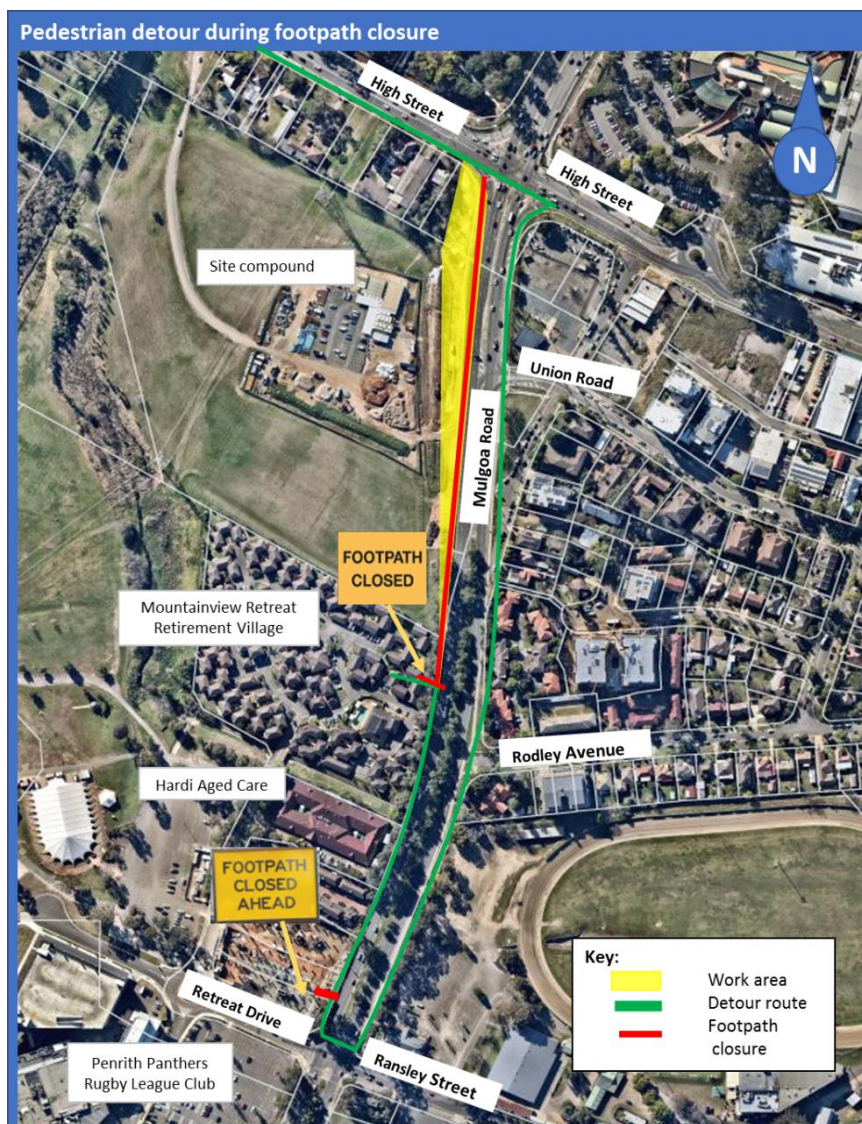


# Temporary closure of the footpath on the western side of Mulgoa Road from Wednesday 9 October 2019

The Australian and NSW governments are jointly funding the \$105 million upgrade of Mulgoa Road, Penrith from Union Road to Museum Drive.

We are progressing with important work to replace the railway bridge and widen the road. The benefit will be improved traffic flow along the Mulgoa Road and Castlereagh Road corridor, including Jane Street and High Street.

From **Wednesday 9 October 2019** until **March 2020**, weather permitting, we will temporarily close the footpath on the western side of Mulgoa Road between Retreat Drive and High Street. Closing the footpath will allow us to carry out utility work and build the new pedestrian path. We will make every effort to complete and reopen the improved footpath earlier than scheduled.





## Our work schedule

We will carry out this work between **Wednesday 9 October 2019 and March 2020, weather permitting.**

Work hours are Monday to Friday between 7am and 6pm, Saturdays 8am to 1pm and some nights from Monday to Sunday between 6pm and 7am.

## Contact

If you have any questions, please contact our delivery partner, McConnell Dowell on 1800 951 118 or via email [mulgoaroad.penrith@mcdgroup.com](mailto:mulgoaroad.penrith@mcdgroup.com).

For more information about our projects visit [rms.nsw.gov.au/projects/sydney-west/index.html](https://rms.nsw.gov.au/projects/sydney-west/index.html)

During the temporary closure, the following key activities will take place:

- truck movements to deliver materials and equipment, including excavators
- removing existing pavement and kerb and gutter including saw cutting, metal cutting and grinding and jackhammering
- investigating and relocating utilities
- earthwork, stormwater drainage and concreting.

## How will the work affect you?

Our work may be noisy from concrete saws and earthwork machinery. We have measures in place to minimise impacts including completing noisier tasks during the day or by **10pm**.

The existing footpath will be unavailable and a pedestrian detour route will be available on the opposite side of Mulgoa Road. The detour includes safe pedestrian crossings at High Street and Retreat Drive to get to the opposite side of Mulgoa Road.

For your safety, please follow the detour route outlined in the map and the direction of the signs.

We apologise for any inconvenience this work may cause and appreciate the patience of residents and pedestrian users.



If you need help understanding this information, please contact the Translating and Interpreting Service on 131 450 and ask them to call us on 1800 951 118.