

Nelson Bay Road Program

Williamstown to Bobs Farm Duplication

Have your say – Route alignment options | September 2019

Background

The NSW Government is investing \$275 million to improve safety and travel times on Nelson Bay Road. The duplication of Nelson Bay Road to provide two lanes in each direction is being delivered as a program of work.

Early work includes the upgrade of the intersection of Nelson Bay Road and Medowie Road which was completed in June 2019. The next stage of early work involves upgrading the Nelson Bay Road and Lemon Tree Passage Road intersection which is planned to start in late 2019.

Roads and Maritime Services is currently planning for duplication of Nelson Bay Road from Williamstown to Bobs Farm as the next priority for the corridor and is considering both on-line and off-line route alignment options. An **on-line** route would follow the existing Nelson Bay Road alignment. An **off-line** route would follow a new road alignment.

Benefits

The proposed duplication of Nelson Bay Road from Williamstown to Bobs Farm involves a series of projects to improve safety and efficiency on the corridor.

Projects on Nelson Bay Road would:

- Provide better connectivity for residents, businesses and the community to Newcastle airport and Williamstown RAAF base
- Improve traffic flow, journey times and safety for motorists on Nelson Bay Road
- Improve pedestrian and bicycle safety
- Support tourism and rural industries as a major economic driver in the Port Stephens area.

Work to date

We have already duplicated a number of sections of Nelson Bay Road including Bobs Farm to Anna Bay, Richardson Road to Lemon Tree Passage Road, Stockton Bridge to Fern Bay and a section between Cabbage Tree Road and Medowie Road.

Key features and sections

The Williamstown to Bobs Farm duplication involves two sections:

- Williamstown to Salt Ash
- Salt Ash to Bobs Farm.

The key features are:

- two lanes in each direction
- improved intersection access
- improved shoulders for cyclists
- minimum 80km/h design.

The current status of the program of work on Nelson Bay Road is shown overleaf.

Route alignment options

Two primary route alignment options are being considered for both sections of the project.

The potential route alignments that are being considered are shown on the map overleaf.

**Have
your
say**

Community and stakeholders are invited to comment on the route alignment options for the duplication of Nelson Bay Road from Williamstown to Bobs Farm. The potential route alignment options are described overleaf. We have also included maps to help explain the project.

The community is invited to provide comment by **5pm on Friday 11 October 2019** to:

@ nelsonbayroad@rms.nsw.gov.au

✉ Nelson Bay Road project team
Roads and Maritime Services
Locked Bay 2030
Newcastle NSW 2300

☎ For more information call **1800 512 277**

Nelson Bay Road corridor

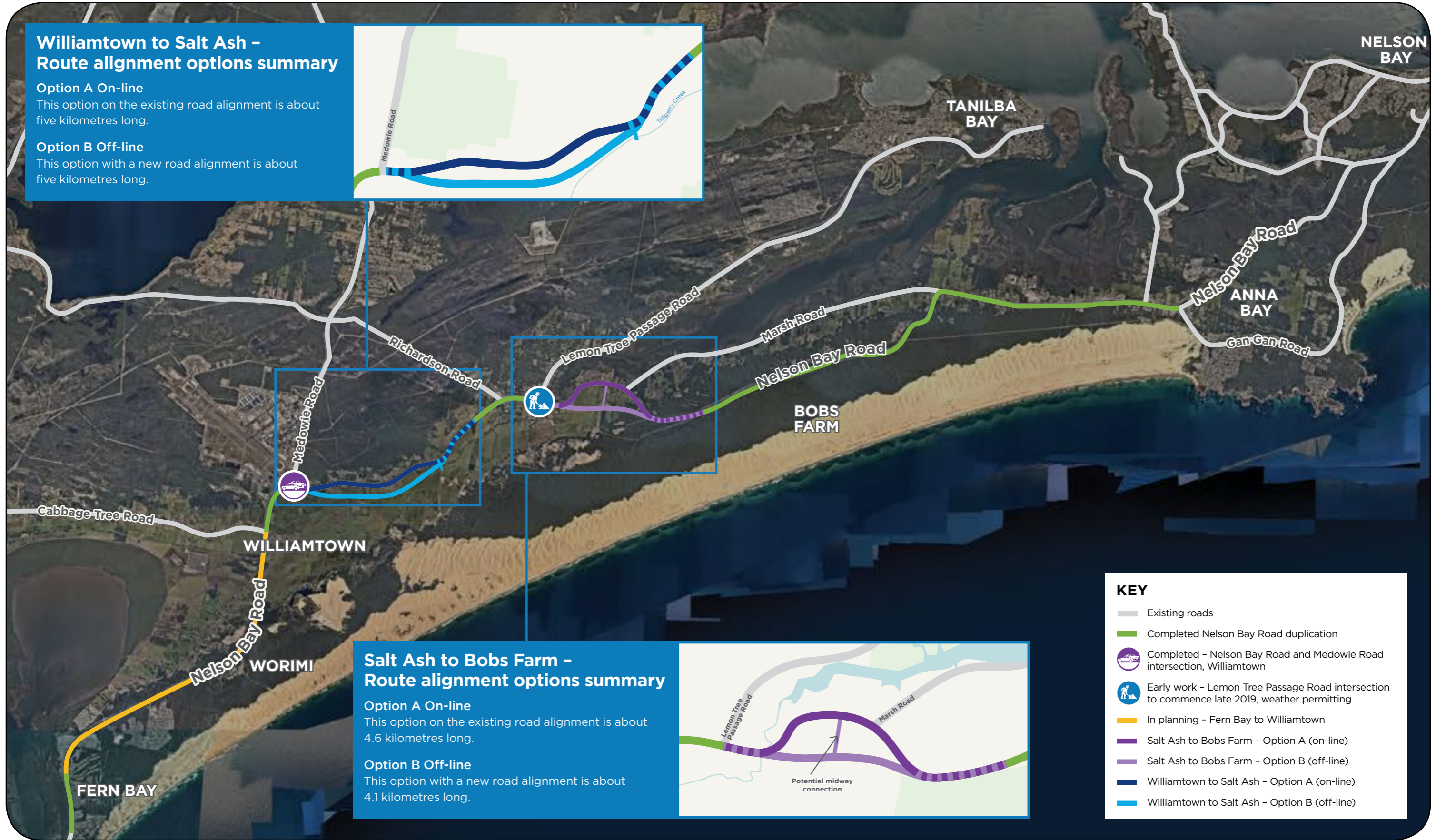
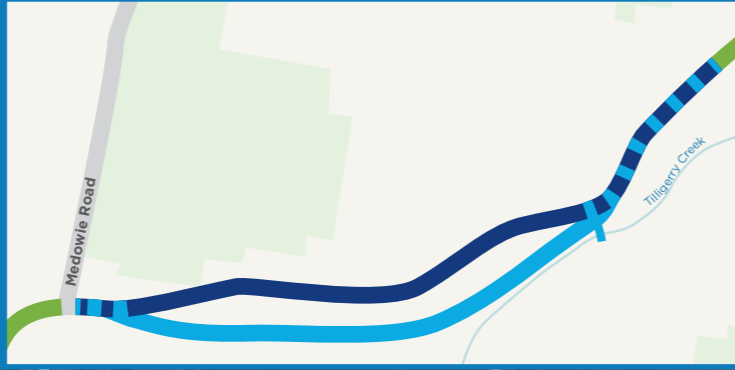
Williamtown to Salt Ash - Route alignment options summary

Option A On-line

This option on the existing road alignment is about five kilometres long.

Option B Off-line

This option with a new road alignment is about five kilometres long.



Salt Ash to Bobs Farm - Route alignment options summary

Option A On-line

This option on the existing road alignment is about 4.6 kilometres long.

Option B Off-line

This option with a new road alignment is about 4.1 kilometres long.



KEY

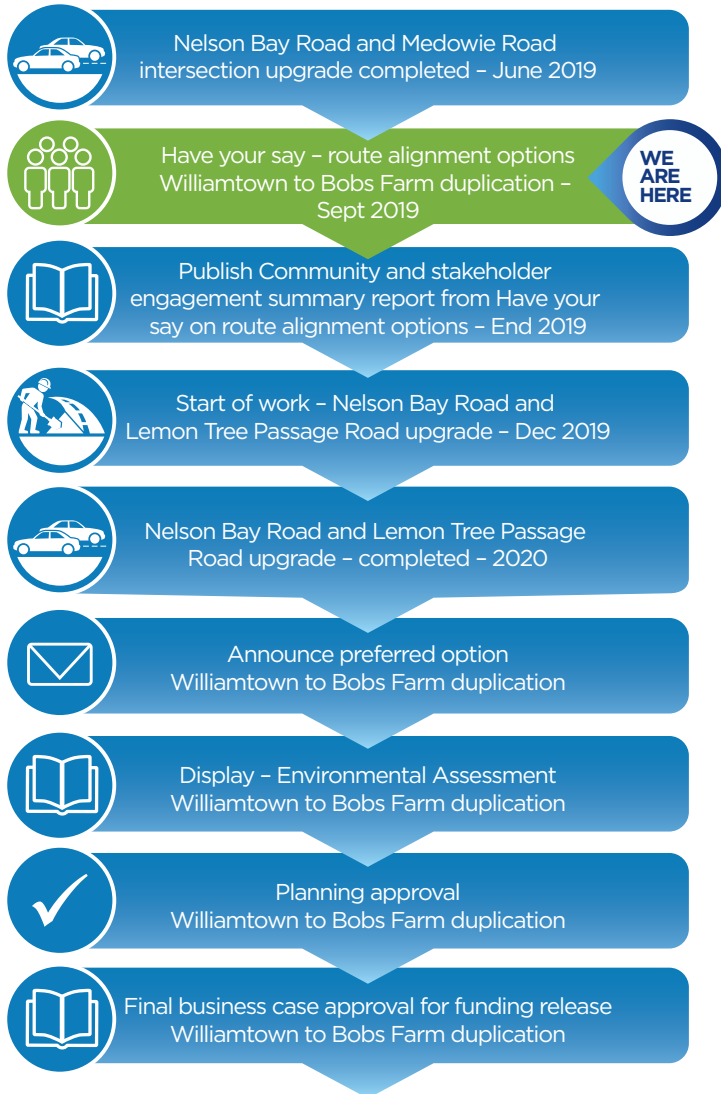
- Existing roads
- Completed Nelson Bay Road duplication
- Completed - Nelson Bay Road and Medowie Road intersection, Williamtown
- Early work - Lemon Tree Passage Road intersection to commence late 2019, weather permitting
- In planning - Fern Bay to Williamtown
- Salt Ash to Bobs Farm - Option A (on-line)
- Salt Ash to Bobs Farm - Option B (off-line)
- Williamtown to Salt Ash - Option A (on-line)
- Williamtown to Salt Ash - Option B (off-line)



Current status of Nelson Bay Road program of work

| Description | Options/Status |
|--|--|
| Nelson Bay Road and Medowie Road intersection upgrade | Completed June 2019 |
| Nelson Bay Road and Lemon Tree Passage Road intersection upgrade | In planning - to start December 2019 |
| Williamtown to Salt Ash section (about 5 kilometres) | In planning - route alignment to be determined |
| Salt Ash to Bobs Farm section (about 4.5 kilometres) | In planning - route alignment to be determined |

Program timeline



Involving the community

We are working with the community and stakeholders during the planning process to understand any concerns relating to the Nelson Bay Road duplication and minimise potential impacts. We are working with the NSW Department of Planning, Industry and Environment to ensure appropriate management of any potential PFAS (per-and-poly-fluoro alkyl substances) in the vicinity of Nelson Bay Road during the delivery of the project.

Feedback received will be considered to finalise the preferred route option for Williamtown to Bobs Farm duplication and to prepare the environmental assessments.

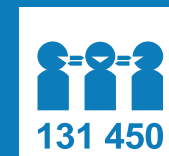
More information will be provided to the community and stakeholders as the project progresses.

Further information

@ nelsonbayroad@rms.nsw.gov.au

Nelson Bay Road project team
Roads and Maritime Services
Locked Bay 2030
Newcastle NSW 2300

1800 512 277



If you need help understanding this information, please contact the Translating and Interpreting Service on 131 450 and ask them to call us on 1800 512 277.