

Construction starts for southbound overtaking lane at Medway Creek in Brocklehurst, Newell Highway

The Newell Highway Program Alliance will carry out initial work to deliver a southbound overtaking lane at Medway Creek in Brocklehurst, north of Dubbo from Monday 15 July.

What are we doing?

A southbound overtaking lane on the Newell Highway, around 17km north of Dubbo through Medway Creek in Brocklehurst will start construction on **Monday 15 July**.

The overtaking lane will extend for about two kilometres southbound along the highway, starting from Medway Road and finish 600 metres south of Broadacre Road. We have included a map showing the location.

Initial work will include establishing the site compound, removing trees, erosion and sediment control.

The project team is investigating options for the use of recycled water during site preparation and road construction, including settling dust.

We are also investigating and will implement appropriate measures to minimise impacts to a threatened bird, the Grey-crowned Babbler, which our team observed in the area. This could include the use of nest boxes in surrounding trees.

How will this affect me?

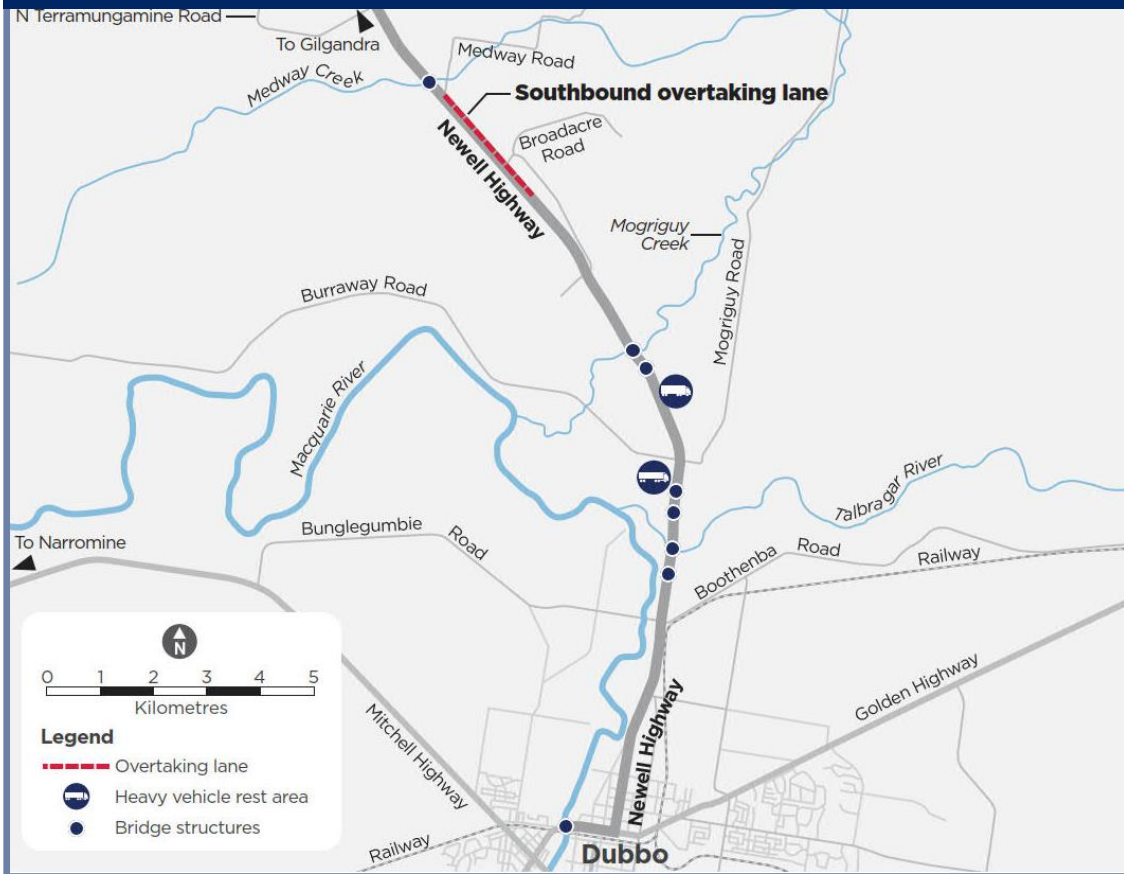
The work will take seven months to complete. Work will be carried out between **7am and 6pm** weekdays and Saturdays, weather permitting. We will let you know in advance if we need to do any work outside these times.

The work will involve the use of machinery which generates some noise. We will make every effort to minimise noise by arranging the work in stages at different locations and turning off machinery and vehicles when not in use.

There will be some temporary traffic changes to ensure the work zone is safe. Lane closures and reduced speed limits will be in place which may affect travel times. The reduced speed limits will apply 24 hours a day, and will vary from 40 km/h to 80 km/h.

Please keep to speed limits and follow the direction of traffic controllers and signs. For the latest traffic updates, you can call 132 701, visit livetraffic.com or download the Live Traffic NSW App.

Southbound overtaking lane at Medway Creek



What happens next?

Initial works will start on Monday 15 July, and we will keep the community regularly informed about the progress of the works.

What else is happening?

Work has commenced for the construction of northbound and southbound overtaking lanes on the Newell Highway through Dustys Creek, north of Gilgandra; and Marthaguy, south of Gilgandra.

Planning for the next north and south bound overtaking lanes along the Newell Highway through Bundaburrah, near Forbes has also started.

More information on these projects can be found on our project website at rms.work/nhpa

Contact us

☎ 1800 577 295

@ info@newellHPA.com.au

💻 rms.work/nhpa



If you need help understanding this information, please contact the Translating and Interpreting Service on 131 450 and ask them to call 1800 577 295.

