

Naree Road closure extension from Friday 29 June to Saturday 14 July 2018

The NSW Government is upgrading roads around the new Northern Beaches Hospital to increase capacity on the road network and improve access through the area

Roads and Maritime Services has been carrying out work in preparation for the upgrade and widening of Frenchs Forest Road and Naree Road to a two way, dual-lane carriageway.

Due to recent wet weather, Naree Road will remain closed until Saturday 14 July, weather permitting. Access to and parking on Naree Road for residents will be available under the direction of traffic controllers. Residents will only be able to drive in a westbound direction (toward Forest Way).

During the closure the following key activities will continue to take place:

- excavating and backfilling trenches
- using a vacuum truck to clean pits
- constructing the footpath
- installing drainage, kerb and gutters
- milling, road resurfacing and asphaltting

Pedestrian access will be maintained at all times, although temporary detours may be in place.

We have included a map to show the detour for this closure.

Working hours

Some of this work will be carried out during our standard construction hours between **7am** and **6pm** from **Monday** to **Friday**, and between **8am** and **6pm** on **Saturday**. We will also work alternating **Sundays** between **8am** and **5pm**. We may need to carry out some of this work of standard construction hours. This out of hours work will be carried out between **8pm** and **5am** from **Monday** to **Friday**.

Residents will be notified about the details of after hour work in separate notifications when dates are confirmed.

How will the work affect you?

The work will involve the use of machinery which will generate some noise and vibration. We will use noise shields to dampen noise where appropriate and ensure equipment and vehicles are turned off when not in use.

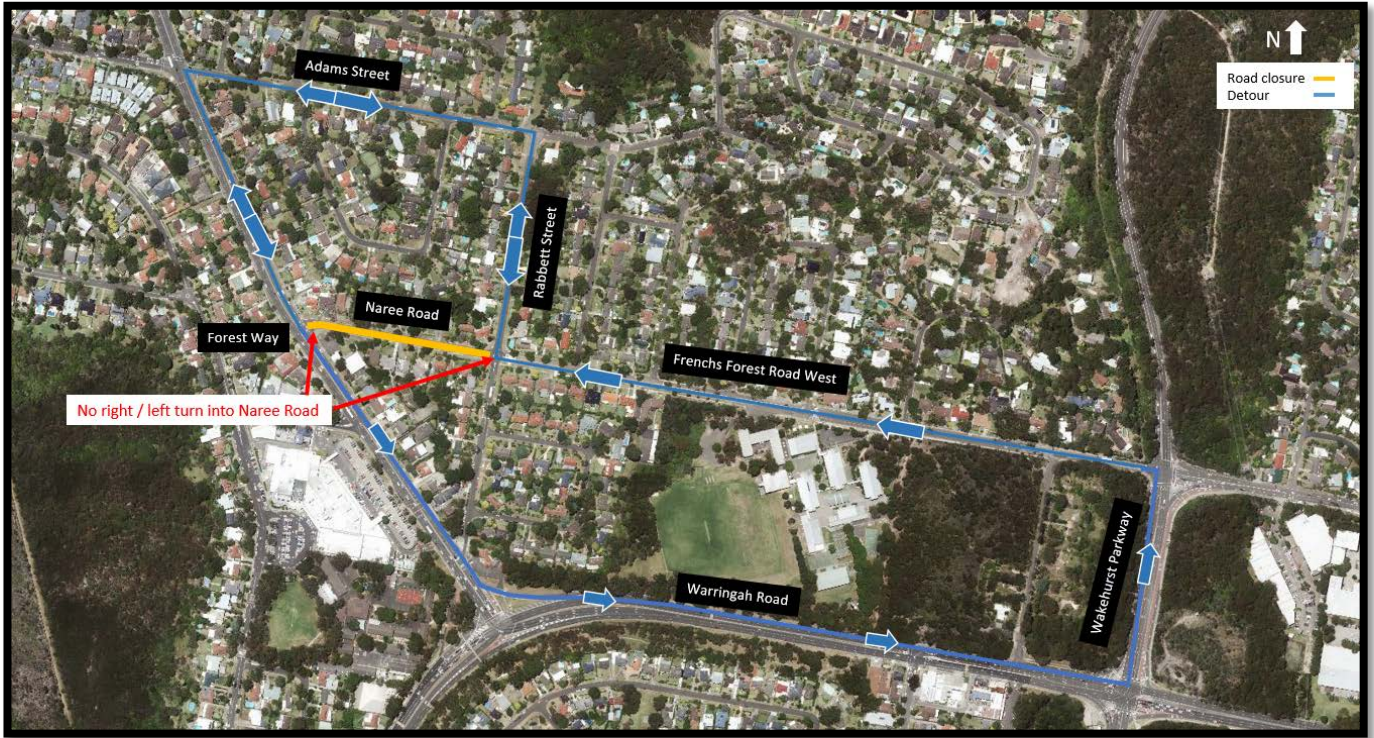
We will also use machinery which may generate some vibration when in close proximity to the work. You may feel vibrations in your house, on occasions. Although this may cause some discomfort for a short time, due to our careful planning, the risk of structural impact on your home is very low.

We will focus lights only on the working area. However, there is likely to be some spill-over of light into some nearby residences.

Traffic changes

The temporary traffic changes are needed to upgrade the road and to ensure the safety of workers, motorists, cyclists and pedestrians and will affect travel times. There will be a detour in place, as outlined in the map below. Please keep to speed limits and follow the direction of traffic controllers and signs. For the latest traffic updates, you can call 132 701, visit livetraffic.com or download the Live Traffic NSW App.

Naree Road closure map



Contact

We are committed to minimising the impact of construction on the community and will continue to keep you informed as the project progresses. If you have any questions, would like to register for project and traffic updates or have any feedback, please contact our delivery partner, Ferrovial York Joint Venture.

Call: 1800 014 307 (free call 24 hours per day)

Email: nbhcommunity@ferrovialyork.com.au

Write: PO Box 6040, Frenchs Forest NSW 2086

Visit: Community Information Centre, Cnr Wakehurst Parkway and Warringah Road (north eastern corner), Frenchs Forest NSW 2086, Open 9am – 5pm, Monday to Friday

Website: rms.nsw.gov.au/nbh

Thank you for your patience during this important work.



Translating and Interpreting Service

If you need an interpreter, please call the Translating and Interpreting Service (TIS National) on **131 450** and ask them to telephone Ferrovial York Joint Venture on 1800 014 307

Arabic

إذا كنتم بحاجة إلى مترجم، الرجاء الاتصال بخدمة الترجمة الخطية والشفوية (TIS National) على الرقم 1800 014 307، والطلب منهم الاتصال بوكالتكم **131 450** على الرقم 1800 014 307

Cantonese

若你需要口譯員，請致電 **131 450** 聯絡翻譯和口譯服務署 (TIS National)，要求他們致電 1800 014 307 聯絡 Roads and Maritime Services。

Mandarin

如果你需要口译员，请致电 **131 450** 联系翻译和口译服务署 (TIS National)，要求他们致电 1800 014 307 联系 Roads and Maritime Services。

Greek

Αν χρειάζεστε διερμηνέα, παρακαλείστε να τηλεφωνήσετε στην Υπηρεσία Μετάφρασης και Διερμηνείας (Εθνική Υπηρεσία TIS) στο **131 450** και ζητήστε να τηλεφωνήσουν Roads and Maritime Services στο 1800 014 307

Italian

Se desiderate l'assistenza di un interprete, prego telefonare al Servizio Interpreti e Traduttori (TIS National) al **131 450** chiedendo di contattare Roads and Maritime Services al 1800 014 307

Korean

통역사가 필요하시면 번역통역서비스 (TIS National) 에 **131 450** 으로 연락하여 이들에게 1800 014 307 번으로 Roads and Maritime Services 에 전화하도록 요청하십시오.

Vietnamese

Nếu cần thông ngôn viên, xin quý vị gọi cho Dịch Vụ Thông Phiên Dịch (TIS Toàn Quốc) qua số **131 450** và nhờ họ gọi cho Roads and Maritime Services qua số 1800 014 307