

Additional crossing of the Clarence River at Grafton

Clarence Valley Council

20 April 2010

Project history

1960 Suggestion of a new crossing first discussed.

1999/ 2000 Existing road approaches.

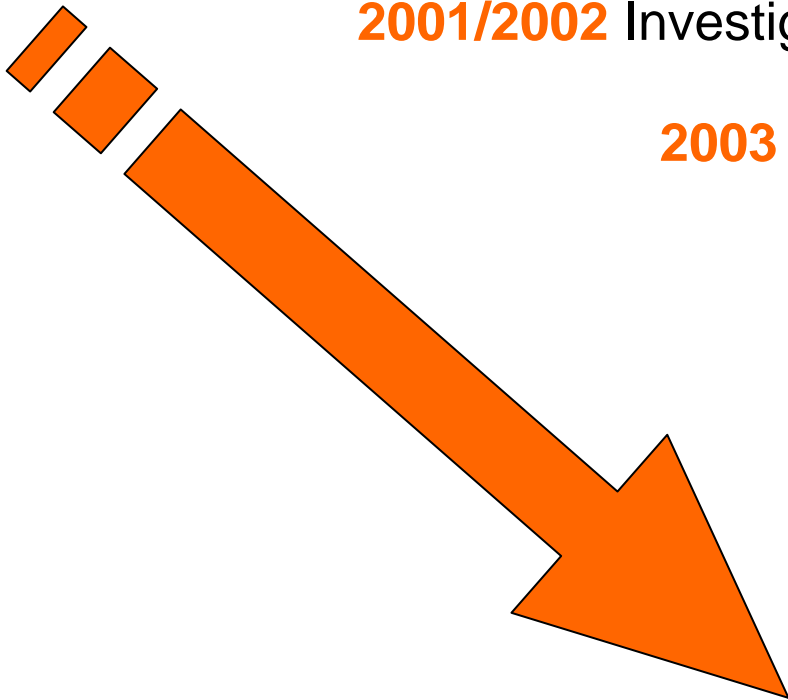
2001/2002 Investigations commenced from *Susan Island and Lawrence*.

2003 Feasibility study released. Route selection process from *Susan Island to Elizabeth Island*

2004 Value Management workshop recommendation.

2005 - Deferral of project of 4 years.

2008 - Meeting with Minister.

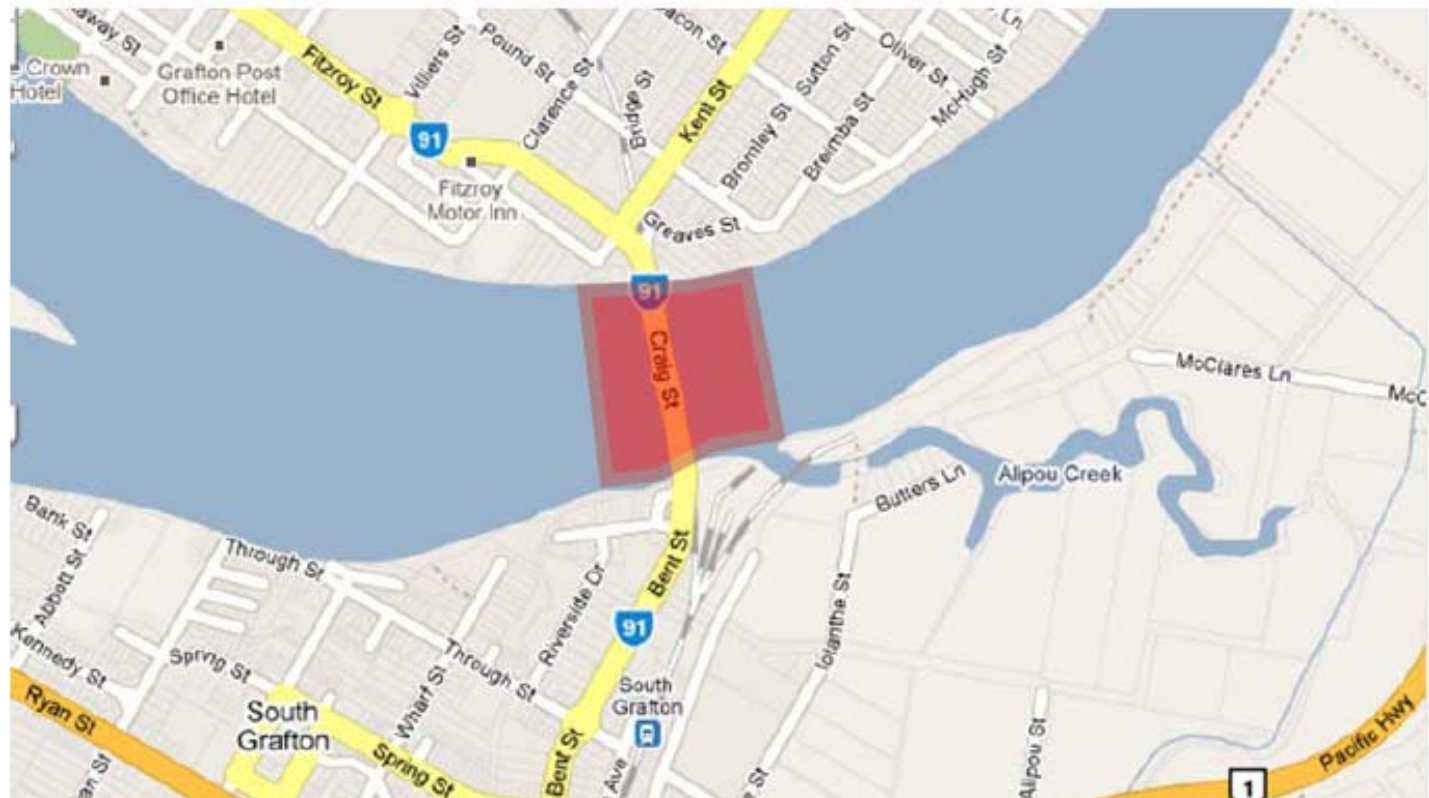
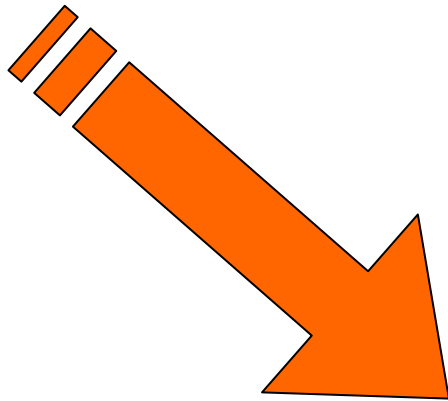


Project history

2009

Review of project.

December - Traffic study released.

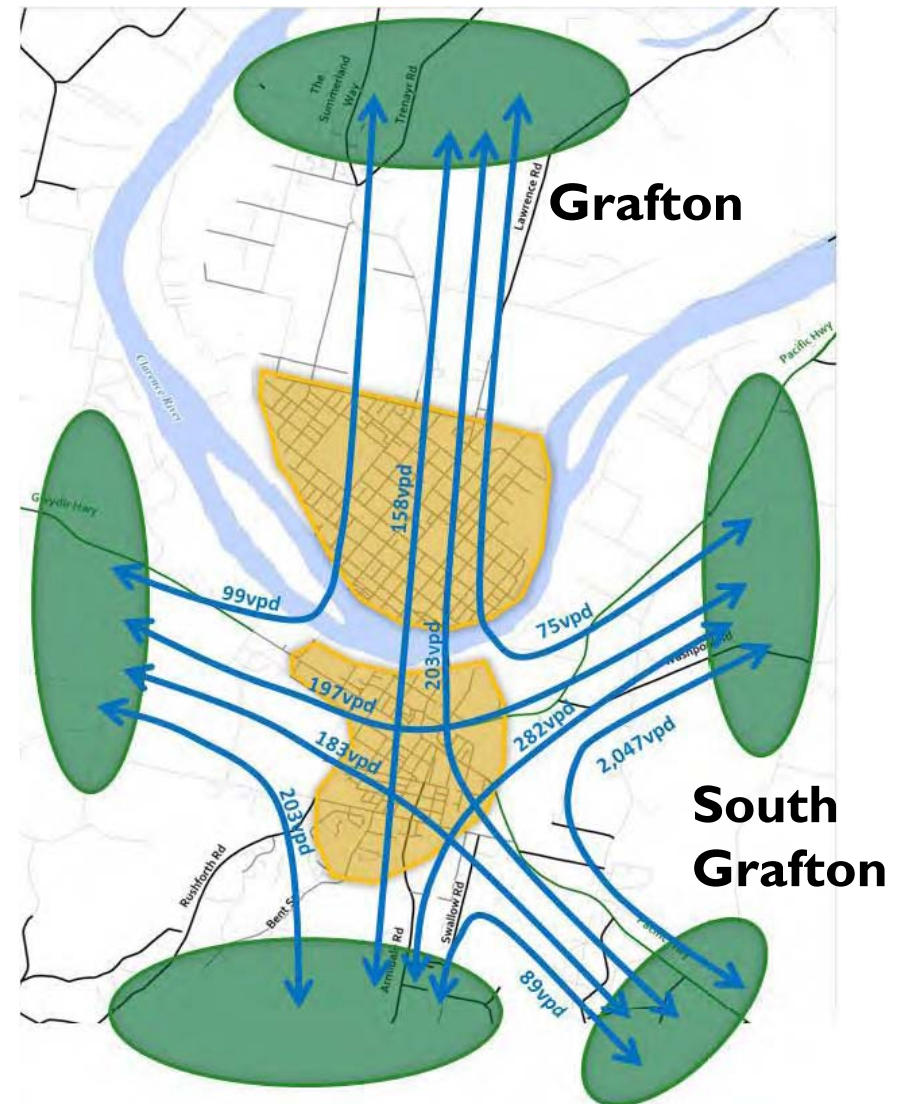


Traffic study

External to External

533 vehicles per day

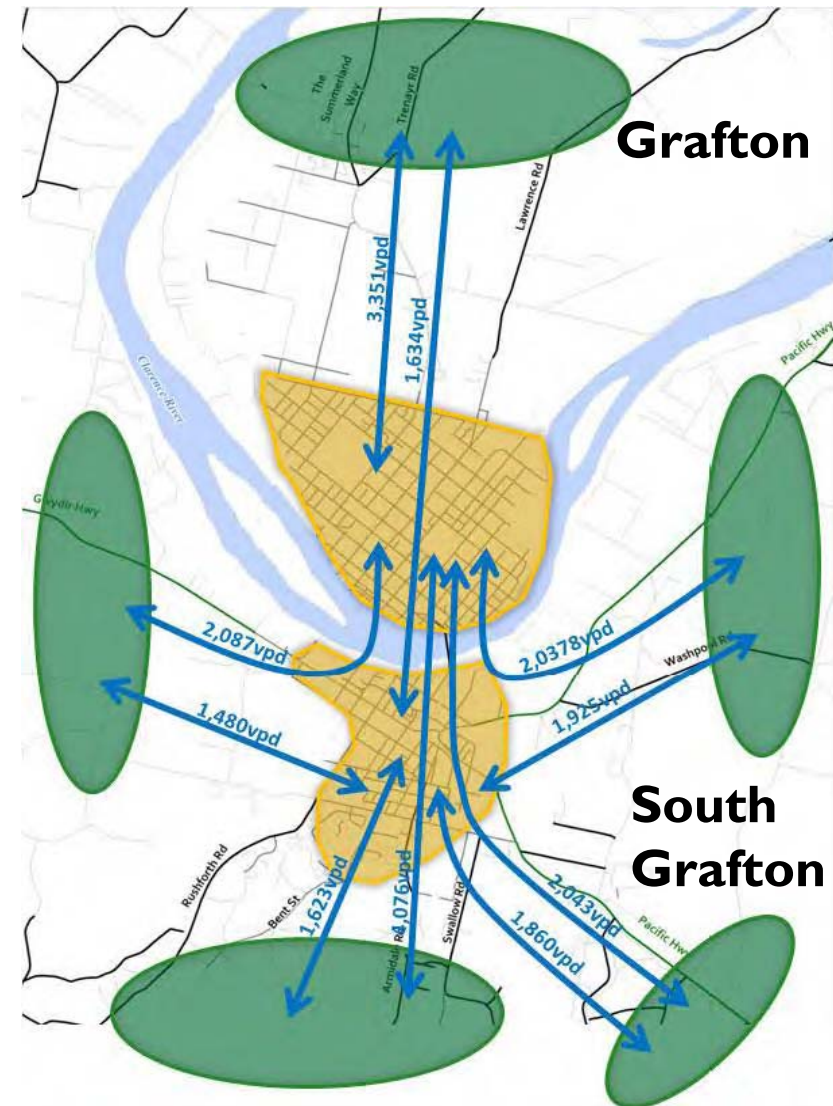
2%



External to Internal

12,219 vehicles per day

53%



Internal to Internal

10,462 vehicles per day

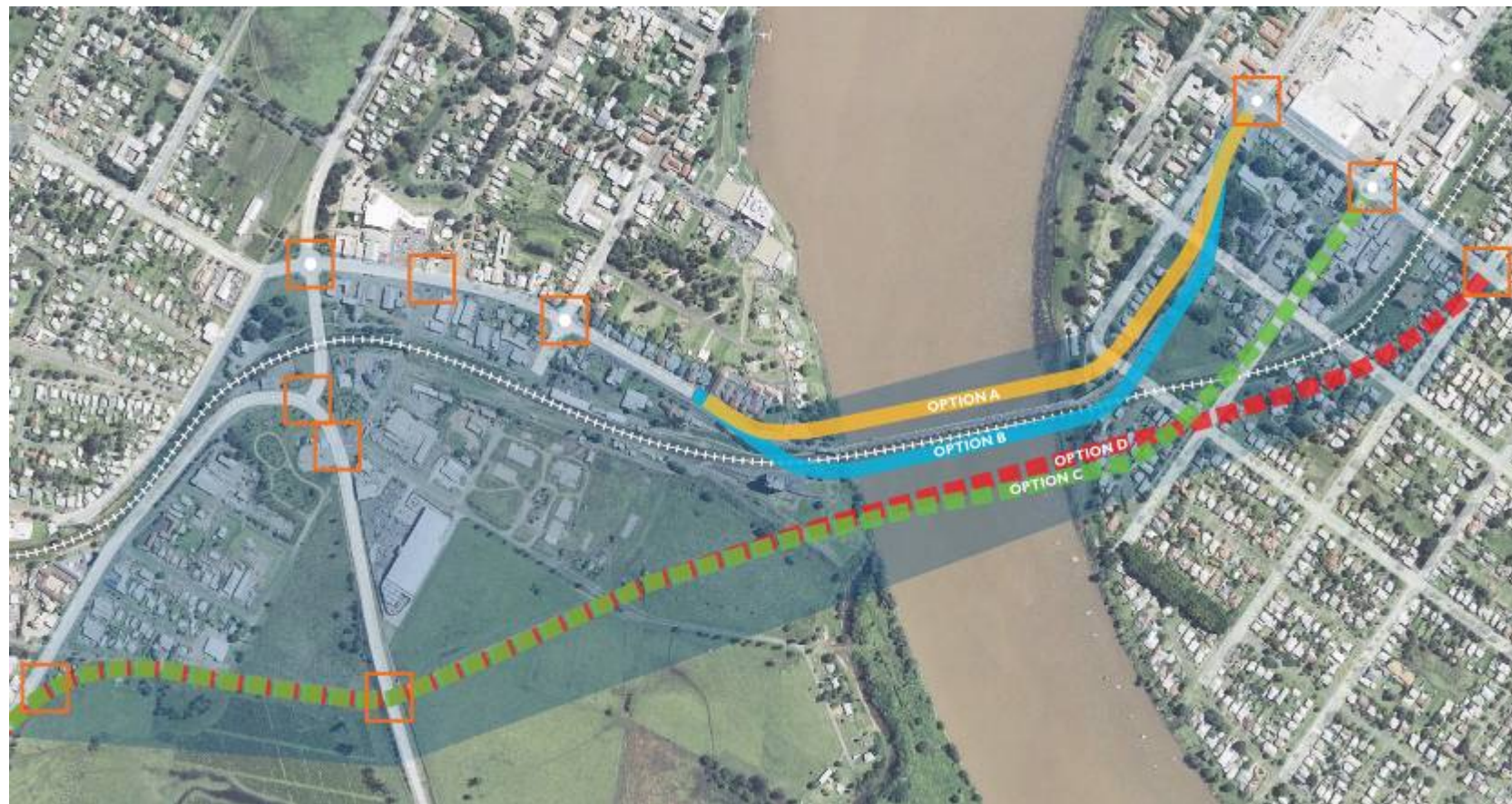
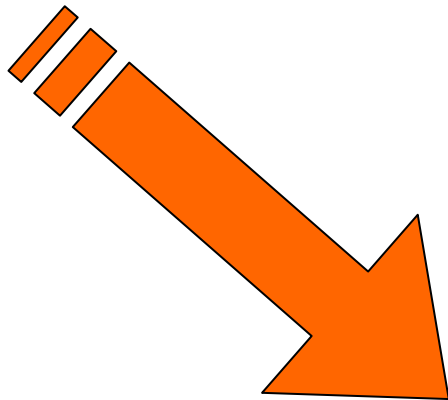
45%



Project history

2010

February - Preliminary options announced.



- Improve traffic efficiency between Grafton and South Grafton.
 - Enhance safety for road users.
 - Support regional and local economic development.
 - Involve all stakeholders and consider their interests.
 - Provide value for money.
 - Minimise impacts on the environment.
-

The process



RELEASE TRAFFIC STUDY REPORT (2009)

PRELIMINARY INVESTIGATION
Additional traffic studies
and development of four preliminary options

WE
ARE
HERE

PUBLIC COMMENT ON THE
PRELIMINARY OPTIONS AND
VALUE MANAGEMENT WORKSHOP

PRELIMINARY ENVIRONMENTAL INVESTIGATIONS
Engineering and social options including considerations
of community comments and refinement inputs/
adjustment of the preliminary options

COMMUNITY CONSULTATION

- Issues paper.
- Revise consultation plan.
- Seek further community involvement
- Develop meeting register.
- Website updates
- SMS/email alerts.

REFINED ROUTE SELECTION PROCESS

CONSIDERATION AND DECISION BY THE RTA
AND THE MINISTER FOR TRANSPORT AND ROADS
ON THE PREFERRED ROUTE

Traffic – Heavy vehicle movements

Grafton

