

TABLE 5

- All options shld follow the existing rd network
- Bring in closer to the railway line on Grafton side.
- feed traffic outside the Grafton CBD area.
- look outside study area.
- Restrict what types of traffic to use existing structure - Transit lanes.
- look @ public transport system.

Grafton Bridge

MR83 Summerland Way - Additional Clarence River crossing - preliminary options

MARCH 2010

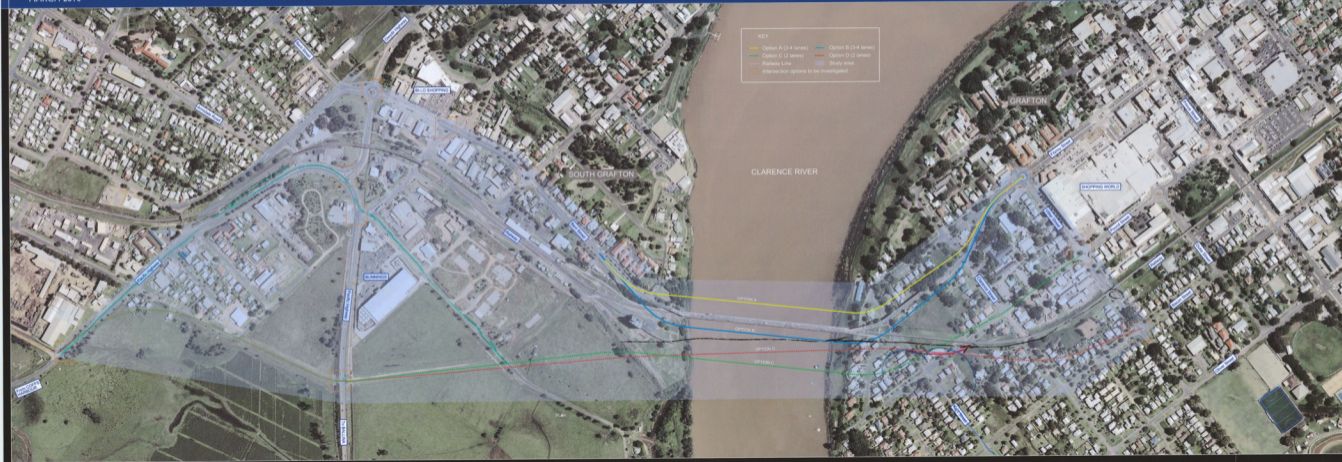


TABLE 5



Options C & D Constraints TABLE 5

- shouldn't start near Notaras
- flooding
- railway
- heavy vehicles shld bypass town.
- TAFE

constraints

A & B

- railway
- visual heritage impact
- Access to properties / widening