

Electrical utility work on the Pacific Highway between Ourimbah and Lisarow from Sunday 20 May to Wednesday 6 June

The NSW Government has provided \$70 million to upgrade the Pacific Highway between Lisarow and Ourimbah to improve traffic flow and safety. Major work started in March 2016 and is expected to be completed by late 2018, weather permitting.

Roads and Maritime Services will be completing out-of-hours work on electrical utilities as part of the Pacific Highway upgrade between Ourimbah and Lisarow. This work is required to be completed out-of-hours to reduce impact on weekday traffic peaks and to ensure safety of workers.

Low voltage cut over work

This work will take two day shifts on consecutive Sundays, **Sunday 20 May** and **Sunday 27 May 2018**, weather permitting. Our Sunday working hours will be from **7am to 5pm**.

High voltage cut over work

This work will take three night shifts from **Sunday 3 June** to **Wednesday 6 June 2018**, weather permitting. Our working hours will be **6pm to 5am**.

The work will be carried out by Ausgrid and Syscon on behalf of Roads and Maritime and will include:

- removing low voltage and high voltage cables no longer required
- electrical cut over to new infrastructure.

We have included a map to show where the work will be carried out.

How will the work affect you?

The work will generate some construction noise. We will make every effort to minimise noise and disturbance during the work.

Traffic changes

Traffic control will be in place which may affect travel times. Traffic in both directions on the Pacific Highway will be stopped intermittently for up to five minutes at a time to allow work to be completed safely.

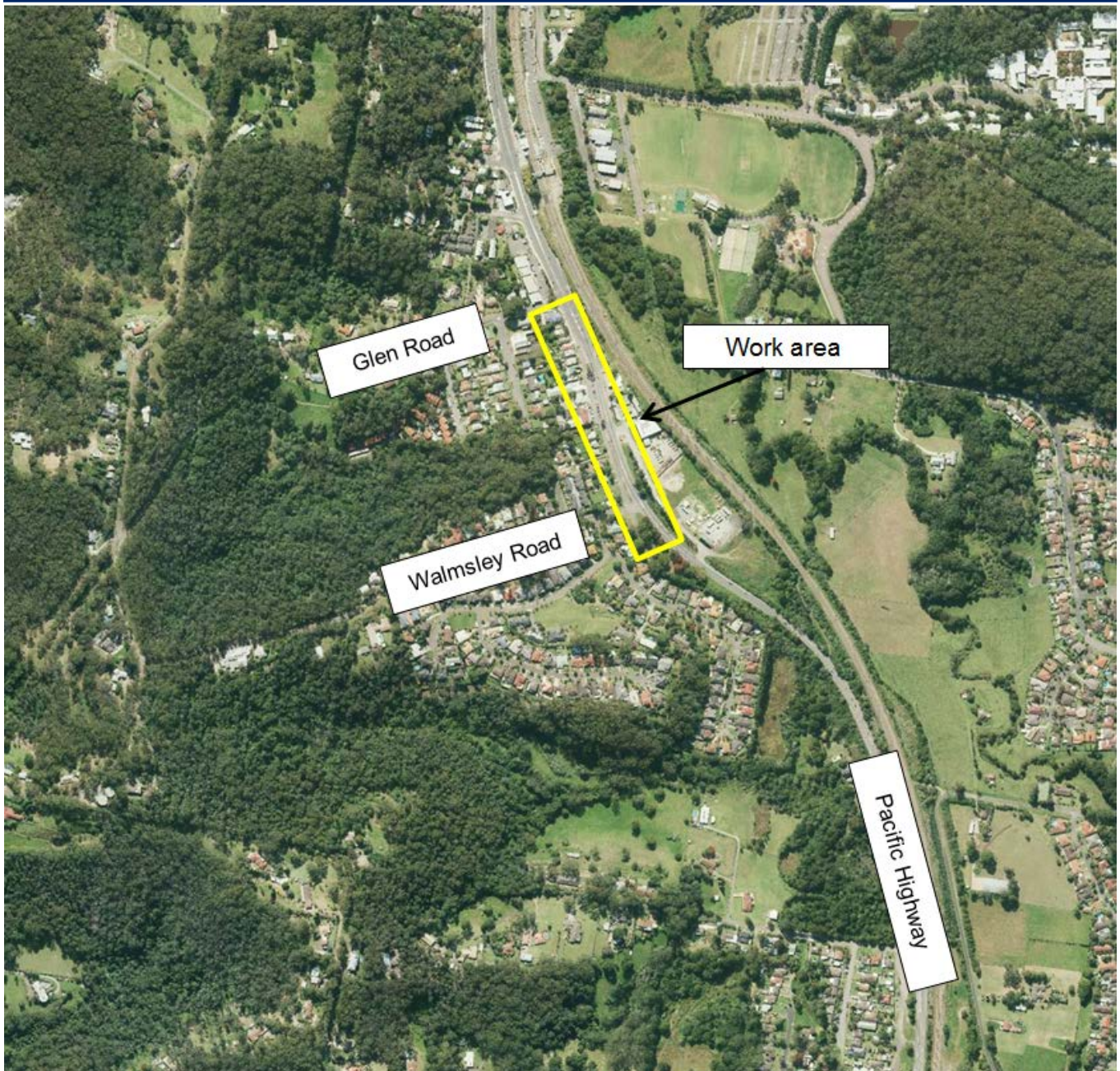
Please keep to speed limits and follow the direction of traffic controllers and signs. For the latest traffic updates, you can call 132 701, visit livetraffic.com or download the Live Traffic NSW App.

Contact

All enquiries should be directed to our delivery partner Civil Mining & Construction on **1800 247 377** (24hrs).

For more information on the project, visit rms.nsw.gov.au/lisarow-ourimbah. Thank you for your patience during this important work. For more information on our projects, visit rms.nsw.gov.au. Thank you for your patience during this important work.

Electrical utility work on Pacific Highway, Lisarow



If you need help understanding this information, please contact the Translating and Interpreting Service on 131 450 and ask them to call us on 0417 388 702.