

Night work on the Pacific Highway at Lisarow from Sunday 1 December

The NSW Government is investing \$178 million to duplicate the Pacific Highway between Ourimbah Street and Parsons Road, Lisarow to improve traffic flow and safety.

We are working between 7am and 6pm on weekdays and 8am and 1pm on Saturdays. Some out of hours work is required for the safety of motorists and workers and to ensure work on the project is carried out as efficiently as possible.

Night work will be carried out during **December** between **6pm** and **7am Sunday to Thursday**, weather permitting.

Residents and businesses will be directly notified in advance of any out of hours work near their property.

Night work will include:

- locating and relocating utility services, including commissioning of new services
- accessing site compounds on Railway Crescent and on the highway near Ourimbah Street
- changes to the traffic arrangements at the Parsons Road roundabout on the Pacific Highway
- asphalt patching of road crossings on The Ridgeway and on the corner of Macdonalds Road and Tuggerah Street.
- materials and equipment deliveries to work sites on the corner of the Pacific Highway and Macdonalds Road and on the highway opposite The Ridgeway and near Lisarow Cemetery.

We have included a map to show the location and type of work in each area.

How will work affect you?

The night work will involve the use of machinery which generates noise.

We will make every effort to minimise noise by completing noisier activities earlier in the night and turning off machinery and vehicles when not in use. Noise blankets will also be used around stationary plant, where possible.

Directly affected residents will be contacted and advised of the likely impact and what we are doing to minimise disruption during the work.

Traffic changes

Lane closures and traffic control will be in place during the work and may affect travel times. There may be short term intermittent stoppages on the Pacific Highway during this work. A temporary 40km/h reduced speed limit will be in place through the work zone for the safety of motorists and workers.

Please keep to speed limits and follow the direction of traffic controllers and signs. For the latest traffic updates, you can call 132 701, visit livetraffic.com or download the Live Traffic NSW App.

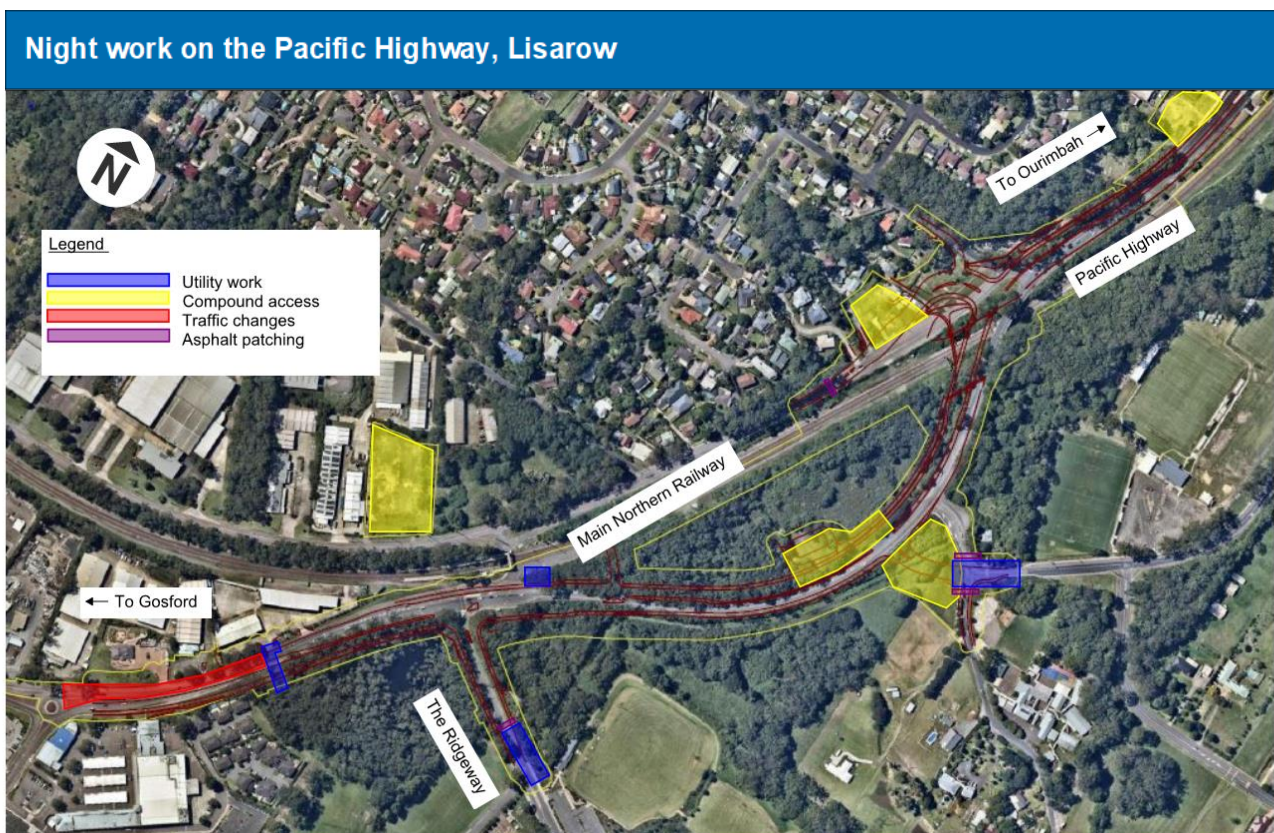
Christmas holiday break

No work will be carried out during the Christmas holiday period from **Friday 20 December 2019** and **Sunday 5 January 2020**. Standby crews will be available during this time and site security, including surveillance cameras, will be in place.

Contact

If you have any questions or complaints, please contact the project information line on 1800 560 667. For more information on our projects, visit rms.nsw.gov.au.

We thank you for your patience while this work is carried out.



If you need help understanding this information, please contact the Translating and Interpreting Service on 131 450 and ask them to call us on 1800 560 667