

## Pitt Town Bypass

### Investigation work from Monday 5 November

The NSW Government is planning a bypass of Pitt Town to reduce traffic through the town centre and improve safety for road users

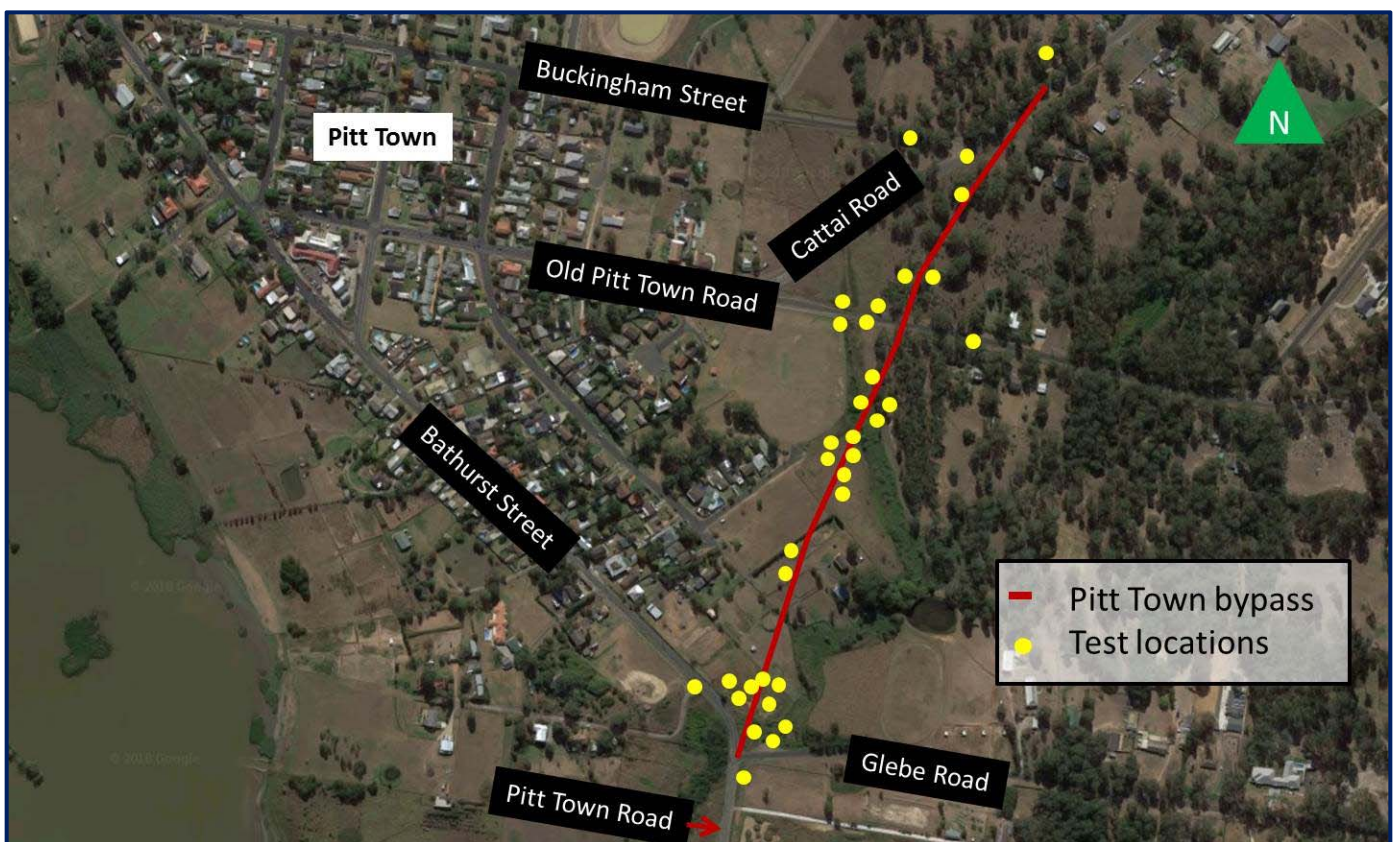
Roads and Maritime Services will carry out investigation work for the Pitt Town bypass project. This work includes:

- ground testing (geotechnical) investigations
- surveying
- utility investigations
- borehole drilling.

The work will include using a drilling rig, vacuum truck, excavator and specialist equipment.

Work will begin from **Monday 5 November** and is scheduled to end by **Thursday 31 January**, weather permitting. We will carry out this work between **7am and 6pm, Monday to Friday**.

#### Location of the work



Note: Locations marked on this map are approximations for general information and illustrative purposes only.

## How will the work affect you?

There will be some noise associated with this work. We are making every effort to minimise the disruption by working during standard daytime hours.

## Traffic changes

There may be some temporary traffic changes to ensure the work zone is safe, including shoulder closures and stoppages. Please keep to speed limits and follow the direction of traffic controllers and signs.

Roads and Maritime apologises for any inconvenience this work may cause and appreciates the patience of the local community.

## Contact

If you have any questions, please contact the Pitt Town Bypass project team on 1800 793 862 or [pitttownroads@rms.nsw.gov.au](mailto:pitttownroads@rms.nsw.gov.au)

For more information on this proposal, visit [www.rms.nsw.gov.au/pitttownbypass](http://www.rms.nsw.gov.au/pitttownbypass)



If you need help understanding this information, please contact the Translating and Interpreting Service on 131 450 and ask them to call us on 1800 793 862.

---