

## Night work on Princes Highway, Kirrawee from Wednesday 4 April

### The NSW Government is funding this \$300 million upgrade to the Princes Highway and major intersections at Kirrawee

The NSW Government is funding this project as part of its \$300 million Gateway to the South Pinch Point Program, which aims to reduce delays, manage congestion and improve travel times on Sydney's major roads.

Roads and Maritime Services will be removing vegetation on main carriageway of the Princess Highway between Auburn Street and Oak Road, Kirrawee.

We have included a map to show the location of the work.

### Our work schedule

We will be on site for **five night shifts** and **10 day shifts** between **Wednesday 4 April** and **Friday 27 April**, weather permitting. Our night work hours will be between **9pm** and **5am** from **Sunday** to **Friday**. Our day work hours will be between **7am** and **6pm** from **Monday** to **Friday** and between **8am** and **1pm** on **Saturday**. We will not be working public holidays.

### How will the work affect you?

Our work may be noisy at times but we will do everything we can to minimise its impact, including completing the noisier tasks by **midnight** and staging them in different locations. We will be using electric saws and elevated working platforms during the night to minimise disruptions and reduce noisy works at night. There will be restricted accesses to residence during the clearing process and this will continue with the water main works. Where residence will lose temporary access to driveways, alternate access and parking will be arranged.

### Traffic changes

There will be temporary traffic changes during our work hours to ensure the work zone is safe.

Lane closures will be in place and may affect travel times. Please keep to speed limits and follow signs and traffic controllers' directions. For the latest traffic updates, you can call 132 701, visit [livetraffic.com](http://livetraffic.com) or download the Live Traffic NSW App.

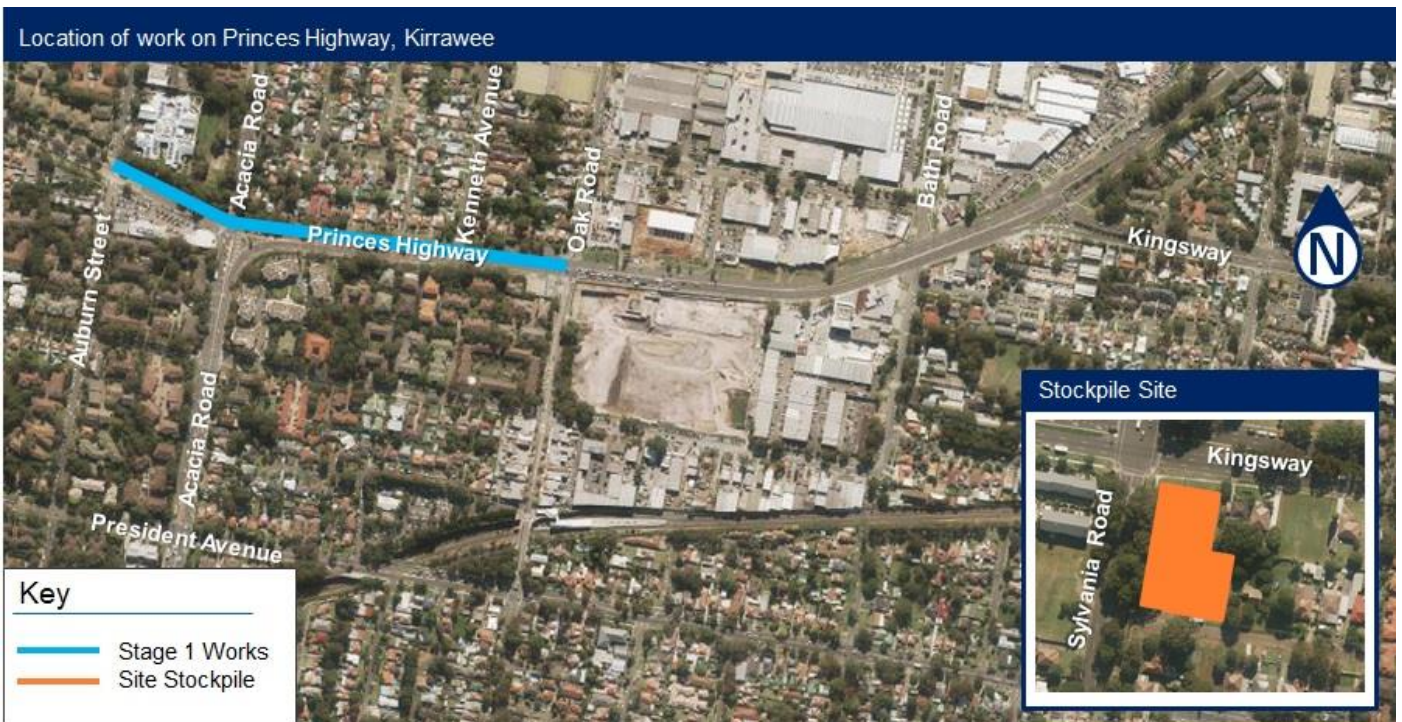
# Contact

If you have feedback or concerns about the project or the proposed work schedule, please contact Hisham Habib on 1300 556 889 or kirrawee@nace.com.au. For more information on our projects, visit rms.nsw.gov.au.

For more information on our projects, visit rms.nsw.gov.au.

Thank you for your patience during this important work.

# Service Road Works



## Translating and Interpreting Service

If you need an interpreter, please call the Translating and Interpreting Service (TIS National) on **131 450** and ask them to telephone Roads and Maritime Services on 1300 556 889

### Arabic

إذا كنتم بحاجة إلى مترجم، الرجاء الاتصال بخدمة الترجمة الخطية والشفهية (TIS National) على الرقم **1300 556 889**، والطلب منهم الاتصال بوكالتكم Roads and Maritime Services على الرقم **131 450**

### Cantonese

若你需要口譯員，請致電 **131 450** 聯絡翻譯和口譯服務署 (TIS National)，要求他們致電 1300 556 889 聯絡 Roads and Maritime Services。

### Mandarin

如果你需要口譯員，請致電 **131 450** 联系翻译和口译服务署 (TIS National)，要求他们致电 1300 556 889 联系 Roads and Maritime Services。

### Greek

Αν χρειάζεστε διερμηνέα, παρακαλείστε να τηλεφωνήσετε στην Υπηρεσία Μετάφρασης και Διερμηνείας (Εθνική Υπηρεσία TIS) στο **131 450** και ζητήστε να τηλεφωνήσουν Roads and Maritime Services στο 1300 556 889

### Italian

Se desiderate l'assistenza di un interprete, prego telefonare al Servizio Interpreti e Traduttori (TIS National) al **131 450** chiedendo di contattare Roads and Maritime Services al 1300 556 889

### Korean

통역사가 필요하시면 번역통역서비스 (TIS National) 에 **131 450** 으로 연락하여 이들에게 1300 556 889 번으로 Roads and Maritime Services 에 전화하도록 요청하십시오.

### Vietnamese

Nếu cần thông ngôn viên, xin quý vị gọi cho Dịch Vụ Thông Phiên Dịch (TIS Toàn Quốc) qua số **131 450** và nhờ họ gọi cho Roads and Maritime Services qua số 1300 556 889

