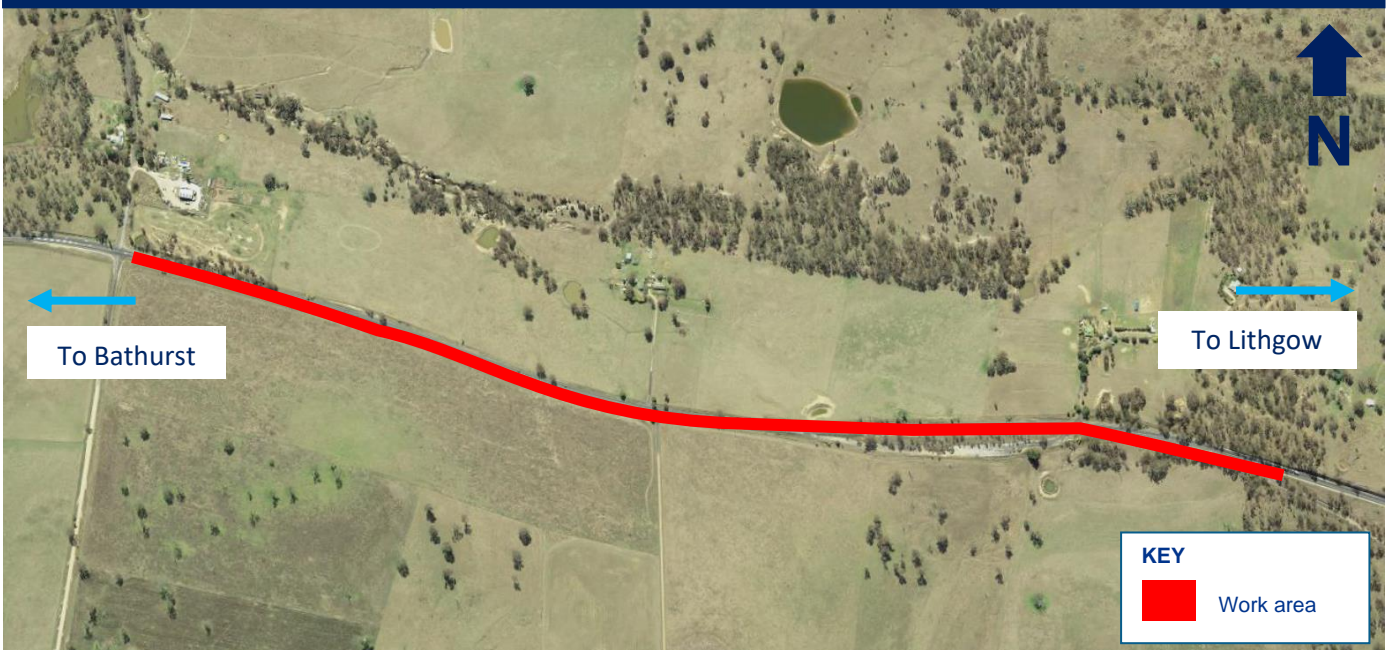


Changed traffic conditions on the Great Western Highway at Glanmire

The NSW Government is funding \$3.5 million to improve safety on the Great Western Highway at Glanmire, 15km east of Bathurst.

Location of works at Glanmire



From Wednesday 4 November, Transport for NSW will commence work on a range of safety upgrades on the Great Western Highway. Work will involve tree removal, widening the road shoulder, installing safety barriers, relocating road signs, and renewing road markings to provide a safer road for motorists

This work is expected to take up to **4 months** to complete, from **Wednesday 4 November – 31 March**, weather permitting.

Work hours will be **7am – 6pm** from **Monday to Friday**.

How will the work affect you?

The work will involve the use of machinery which generates some noise. We will make every effort to minimise noise by turning off machinery and vehicles when not in use.

Traffic changes

There will be some temporary traffic changes to ensure the work zone is safe. Traffic control and a reduced speed limit of 40km/hr will be in place during the work hours.

Please keep to speed limits and follow the direction of traffic controllers and signs. For the latest traffic updates, you can call 132 701, visit livetraffic.com or download the [Live Traffic NSW](#) App.

Contact

If you have any questions, please contact the project team on 1800 167 499 or western.projects@transport.nsw.gov.au

For more information on our projects, visit nswroads.work

Thank you for your patience during this important work.



If you need help understanding this information, please contact the Translating and Interpreting Service on 131 450 and ask them to call (02) 6352 8952.