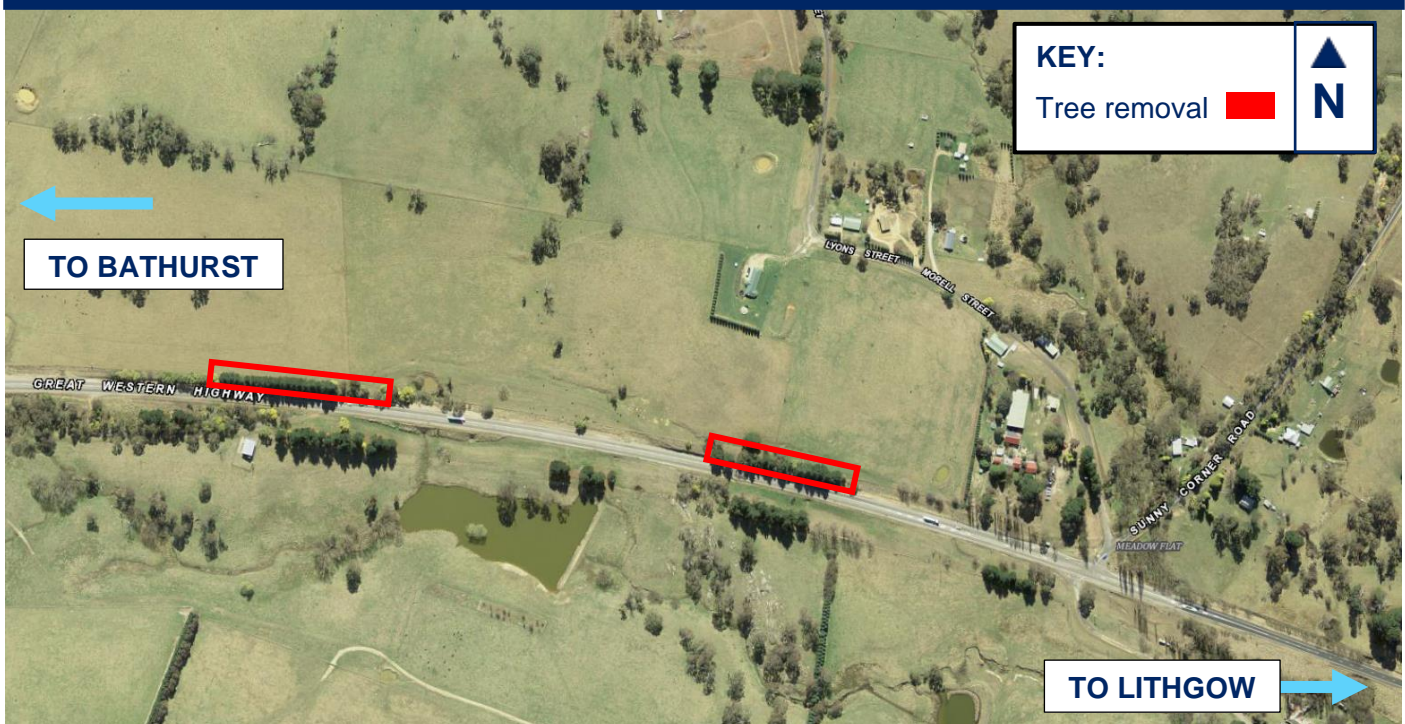


Tree removal on the Great Western Highway at Meadow Flat from Tuesday 3 November

Transport for NSW will be removing a number of trees as part of the Great Western Highway safety upgrade 33km east of Bathurst

Location of tree clearing on Great Western Highway at Meadow Flat



The work includes removing trees in order to reduce the risk of black ice during winter months. Removal of trees will take 2 weeks, weather permitting; the map above shows the location of work.

Transport for NSW will be carrying out work between **7am** and **6pm** Monday to Friday and is expected to be completed in **2 weeks**, weather permitting.

We will let you know in advance if we need to do any work outside these times.

How will the work affect you?

The work will involve the use of machinery which generates some noise. We will make every effort to minimise noise by turning off machinery and vehicles when not in use.

Traffic changes

There will be some temporary traffic changes to ensure the work zone is safe.

Please keep to speed limits and follow the direction of traffic controllers and signs. For the latest traffic updates, you can call 132 701, visit livetraffic.com or download the Live Traffic NSW App.

Contact

If you have any questions, please contact the project team on 1800 167 499 or western.projects@transport.nsw.gov.au.

For more information on our projects, visit nswroads.work.

Thank you for your patience during this important work.



If you need help understanding this information, please contact the Translating and Interpreting Service on 131 450 and ask them to call 1800 167 499