

July 2017

Field investigations and night work on the M31 Hume Motorway and Menangle Road, Menangle Park from Wednesday 19 July 2017

The NSW Government is proposing to build a link road from the Menangle Park development area to Menangle Road, to support future growth. This 2.5 kilometre road, including north facing motorway ramps, will form part of the future Spring Farm Parkway linking the Camden Bypass, the M31 Hume Motorway and Menangle Road, Menangle Park.

Roads and Maritime Services will be carrying out geotechnical investigations in several locations on the M31 Hume Highway and Menangle Road, Menangle Park. These investigations will inform the design for the proposed Spring Farm Parkway.

The investigation work will involve drilling boreholes to provide details on surrounding ground conditions. Please refer to the map on the back of this page for the location of this work.

The work will take place between **8am and 5pm** from **Wednesday 19 July to Thursday 27 July**, weather permitting. In order to reduce impact on road users, some night work will be carried out on the M31 Hume Highway and Menangle Road between **8pm and 5am** when traffic volumes are lower.

How will the work affect you?

Our work may be noisy however we will reduce noise impact by arranging the work in stages at different locations and scheduling work near residential areas earlier in the evening.

Traffic changes

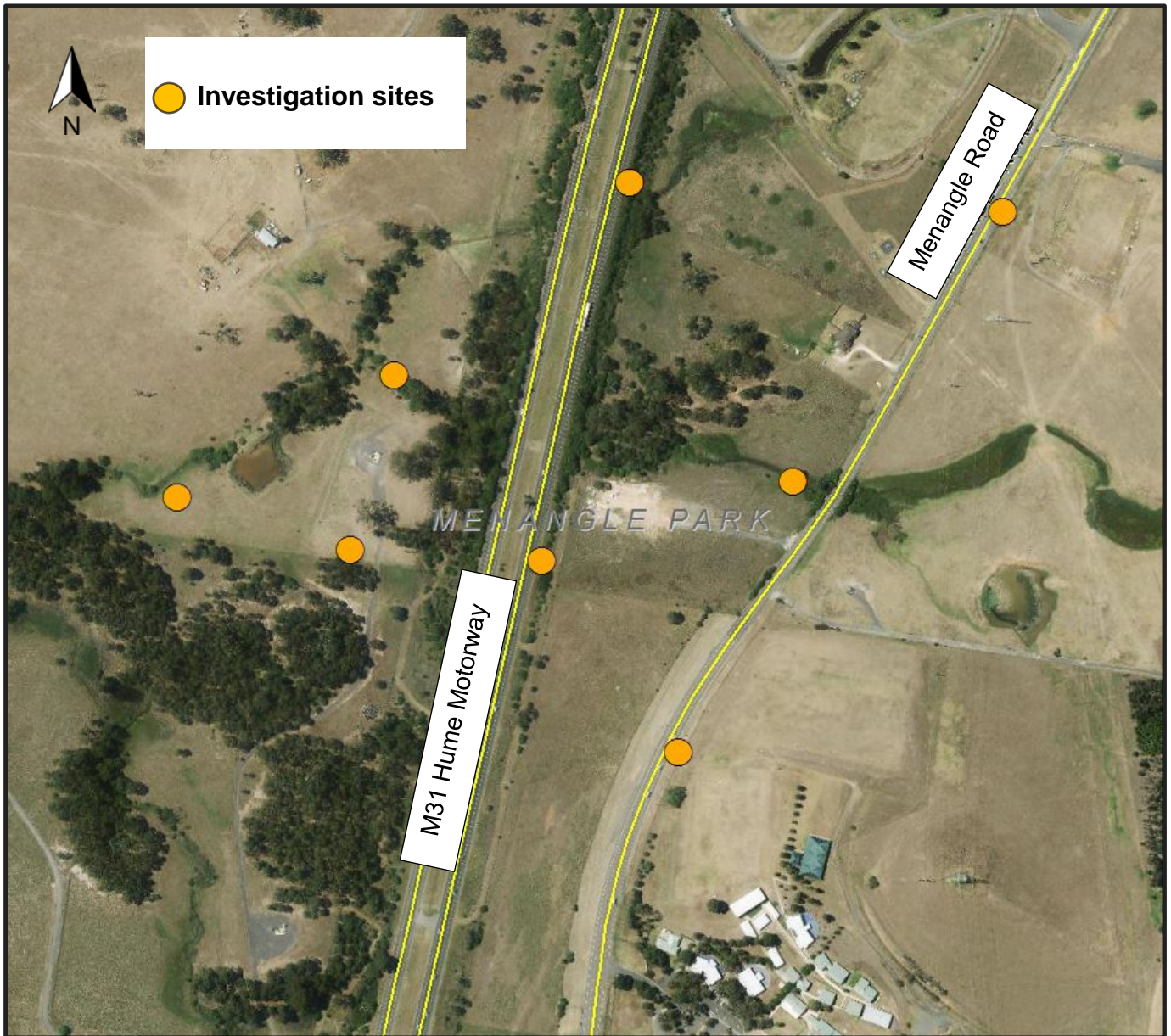
There will be some temporary traffic changes to ensure the safety of road users and workers. Some lane closures will be in place and may affect travel times. Access to properties will be maintained.

Please keep to speed limits and follow the direction of traffic controllers and signs. For the latest traffic updates, you can call 132 701, visit livetraffic.com or download the Live Traffic NSW App.

Contact

If you have any questions, please contact the project team on 1800 316 866 or Springfarmparkway@rms.nsw.gov.au. For more information on the proposed Spring Farm Parkway, visit www.rms.nsw.gov.au/springfarmparkway. Thank you for your patience during this important work.

Location of site investigations



If you need help understanding this information, please contact the Translating and Interpreting Service on 131 450 and ask them to call us on 1800 316 866.