



Australian Government

BUILDING OUR FUTURE



November 2019

Work continues on The Northern Road between Eaton Road, Luddenham and Glenmore Parkway, Glenmore Park

Roads and Maritime Services will continue work on The Northern Road from Eaton Road, Luddenham to Glenmore Parkway, Glenmore Park **from 30 November 2019 to 29 February 2020**.

As part of this work for the project, **we will close the area along the northbound side of the road between Bradley Street and Glenmore Parkway from Friday 6 December 2019. We have included a map to show the area that will be closed.**

We will also continue to carry out work across the whole project area, including:

- installing, removing and maintaining traffic control measures
- investigating and relocating utilities
- earth work, road surface work and vegetation clearing
- line marking and removal
- general maintenance of work area.

This work will take place along The Northern Road and side streets between Eaton Road, Luddenham and Glenmore Parkway, Glenmore Park.

To ensure the safety of workers and motorists and to minimise the disruption to the road network, we will need to carry out some of this work outside standard construction hours which are.

- Monday to Friday – 7am to 6pm
- Saturday – 8am to 1pm
- No work on Sundays or public holidays

When we need to work outside standard construction hours, we will notify directly impacted residents and businesses.

How will the work affect you?

There will be some noise associated with this work. Noisy night work will **not occur** at the same location for more than three nights per week. Work will also be limited to two consecutive nights at a time in a particular location. We will make every effort to minimise noise by arranging the work in stages at different locations.

Traffic changes

There may be temporary traffic changes to ensure the safety of workers and motorists. Please adhere to the displayed speed limits and follow the direction of traffic controllers and signs.

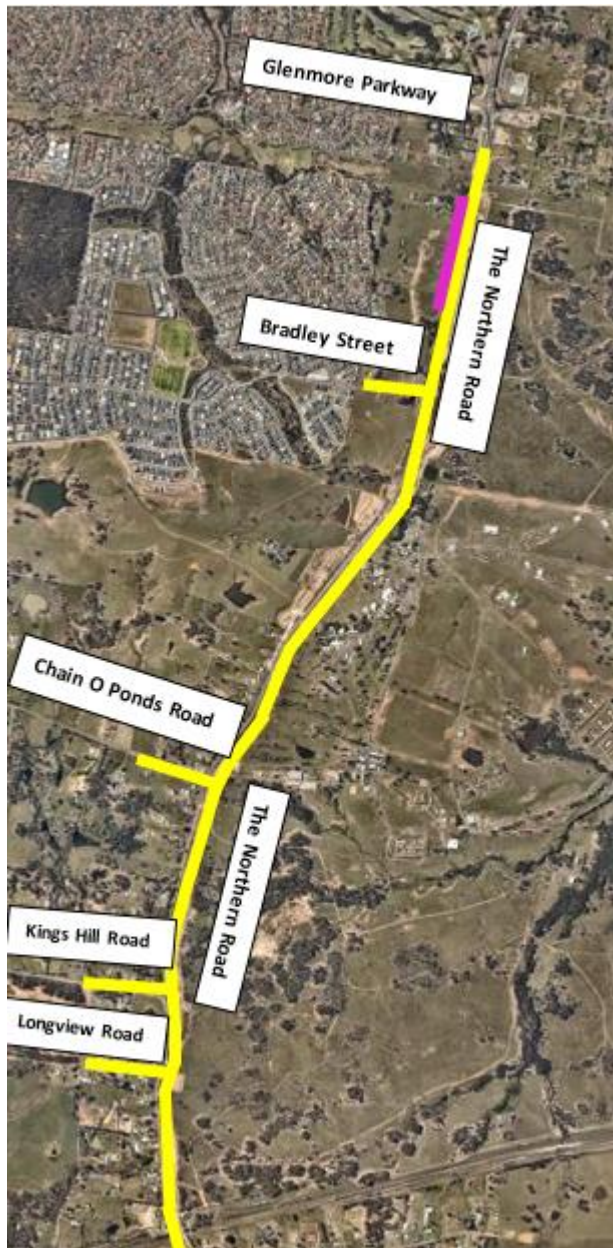
For the latest traffic updates, you can call 132 701, visit livetraffic.com or download the Live Traffic NSW App.

Contact

For further information, please contact the project Community Relations Manager on 1800 703 457 press 1 then press 5 or email thenorthernroad@rms.nsw.gov.au or rms.nsw.gov.au/thenorthernroad.

Thank you for your patience during this important work.

Maps showing location of work



Translating and Interpreting Service

If you need an interpreter, please call the Translating and Interpreting Service (TIS National) on **131 450** and ask them to telephone Roads and Maritime Services on 1800 703 457

Arabic

إذا كنتم بحاجة إلى مترجم، الرجاء الاتصال بخدمة الترجمة الخطية والشفهية (TIS National) على الرقم 131 450، والطلب منهم الاتصال بوكالتكم Roads and Maritime Services على الرقم 1800 703 457

Cantonese

若你需要口譯員，請致電 131 450 聯絡翻譯和口譯服務署 (TIS National)，要求他們致電 1800 703 457 聯絡 Roads and Maritime Services。

Mandarin

如果你需要口译员，请致电 131 450 联系翻译和口译服务署 (TIS National)，要求他们致电 1800 703 457 联系 Roads and Maritime Services。

Greek

Αν χρειάζεστε διερμηνέα, παρακαλείσθε να τηλεφωνήσετε στην Υπηρεσία Μετάφρασης και Διερμηνείας (Εθνική Υπηρεσία TIS) στο **131 450** και ζητήστε να τηλεφωνήσουν Roads and Maritime Services στο 1800 703 457

Italian

Se desiderate l'assistenza di un interprete, prego telefonare al Servizio Interpreti e Traduttori (TIS National) al **131 450** chiedendo di contattare Roads and Maritime Services al 1800 703 457

Korean

통역사가 필요하시면 번역통역서비스 (TIS National) 에 **131 450** 으로 연락하여 이들에게 1800 703 457 번으로 Roads and Maritime Services 에 전화하도록 요청하십시오.

Vietnamese

Nếu cần thông ngôn viên, xin quý vị gọi cho Dịch Vụ Thông Phiên Dịch (TIS Toàn Quốc) qua số **131 450** và nhờ họ gọi cho Roads and Maritime Services qua số 1800 703 457