

May 2017

## **Western Harbour Tunnel and Beaches Link - geotechnical investigations from the week of 15 May 2017**

### **The NSW Government is funding preferred route investigations including geotechnical testing for the Western Harbour Tunnel and Beaches Link.**

The Western Harbour Tunnel will connect to WestConnex at the Rozelle Interchange, cross underneath Sydney Harbour between the Birchgrove and Waverton areas and connect with the Warringah Freeway at North Sydney. Beaches Link will connect the Warringah Freeway with the Burnt Bridge Creek Deviation at Balgowlah and upgrade the Wakehurst Parkway to two lanes each way, between Seaforth and Frenchs Forest.

Roads and Maritime Services conducts geotechnical testing to gather information about underground rock and soil conditions across a broad area. Data from this work will be used to inform the engineering design, final costings and a construction timeline.

A site identified by our geologists for test drilling is at Bangaroo Street, North Balgowlah (see map over the page). Work at this site will start from the week of Monday 15 May 2017 and will take around two days to complete, weather permitting.

The work will take place between 7am and 6pm Monday to Friday and between 8am and 1pm on Saturday. There will be no work at night on Sundays or on public holidays.

A temporary work site with safety fencing will be established to ensure community safety. When the work is completed, the hole will be filled in and the test site restored to its previous condition.

### **How will the work affect you?**

There will be no disruptions to traffic flows on Bangaroo Street or Brook Road and appropriate site controls will be in place.

There may be some noise associated with this work. We will minimise disturbance to the local community and operate in an environmentally sensitive and sustainable manner.

The location of these tests does not indicate a possible alignment and the work is designed to gather data about rock strata and conditions deep below ground.

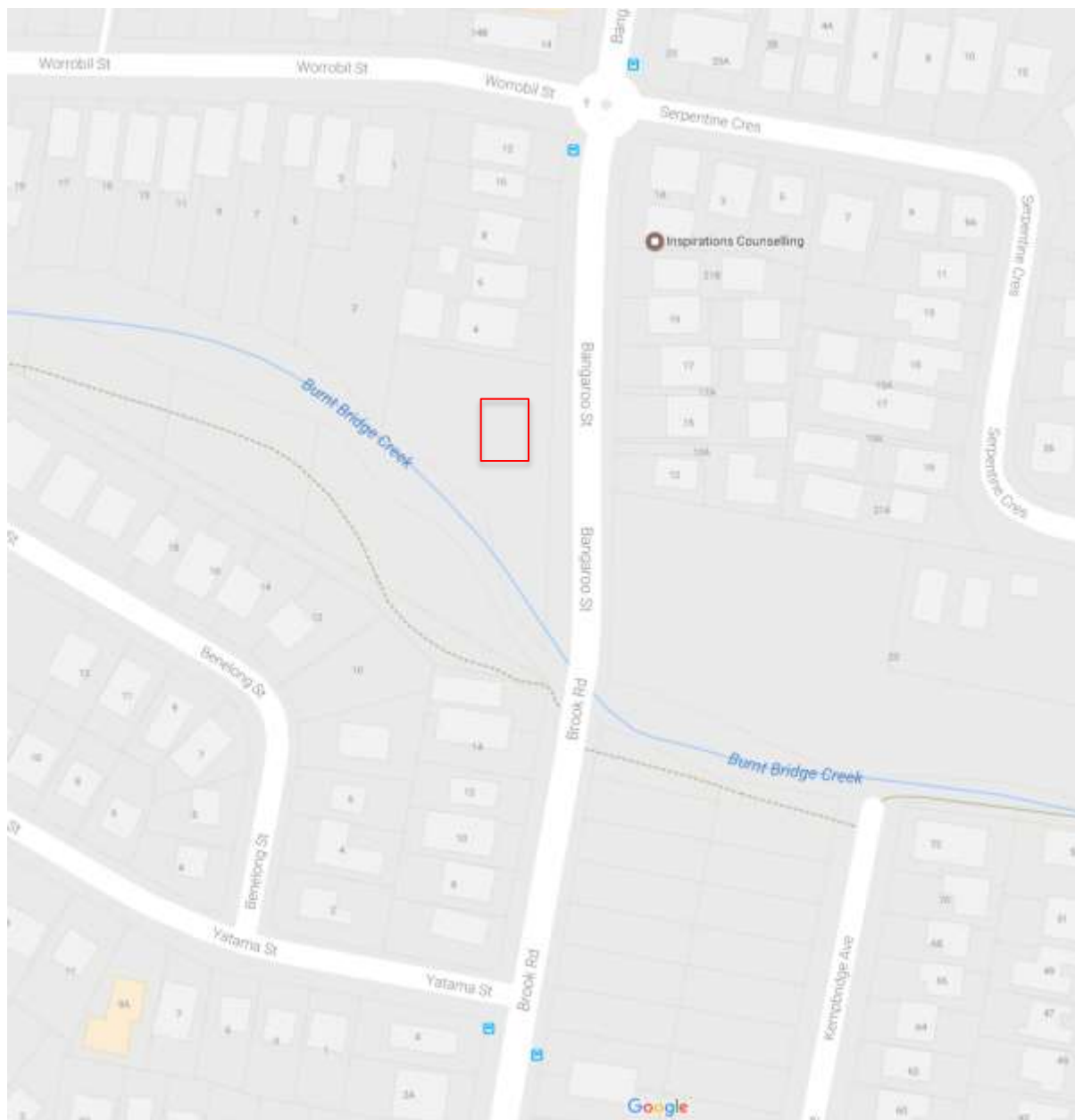
Geotechnical testing involves drilling small diameter holes (about the size of an orange) to extract rock samples used for scientific testing and analysis. Equipment will include a self-propelled drilling rig, support equipment as well as various hand tools.

## Contact

If you have any questions please call our project team on 1800 789 297 during office hours (8.30am to 5pm Monday to Friday) or [motorwaydevelopment@rms.nsw.gov.au](mailto:motorwaydevelopment@rms.nsw.gov.au). Thank you for your patience during this important work.

## Work area

### Bangaroo Street, North Balgowlah – geotechnical work site



## Translating and Interpreting Service

If you need an interpreter, please call the Translating and Interpreting Service (TIS National) on 131 450 and ask them to telephone Burtons on 1800 631 531.

