



U/W Bridge Inspection

Contract 10.2535.0889

**B 415 Windsor Bridge
Follow-up Inspection
15.6.2011**

COMPANY DIRECTORS

Martin Woschitzka
PH: (02) 6656 4411

Mob: 0418 666 220

Email: info@commercialdivingsolutions.com

Chris Connell
PH: (02) 6654 1930
FX: (02) 6654 0328
Mob: 0418 542 310



Commercial Diving Solutions Pty Ltd
ABN 60 091 624 805

RTA Contract No. 10.2535.0889
B 415 Windsor Bridge

Date: 20.6.2011

RTA Parramatta
Attn: Peter Ton

B 415 Windsor Bridge over Hawkesbury River, Follow-up inspection

In accordance with your requirements and email from 10.6.2011, Commercial Diving Solutions Pty Ltd (CDS P/L) carried out the required follow-up inspection, re-documentation (photos) and fixing of glass slides in 12 locations on the 15.6.2011.

When comparing data and photos from the original inspection (9.4. to 20.4.2011) to this data set which was obtained after the Load Testing of the Bridge, carried out by RTA on the night from 8.6. to 9.6.2011, no evidence appears to be present that the horizontal cracks in piles P5p1, P5p2 and P6p2 have changed, widened or shifted. The same appears to be the case for the small vertical crack in P5p1.

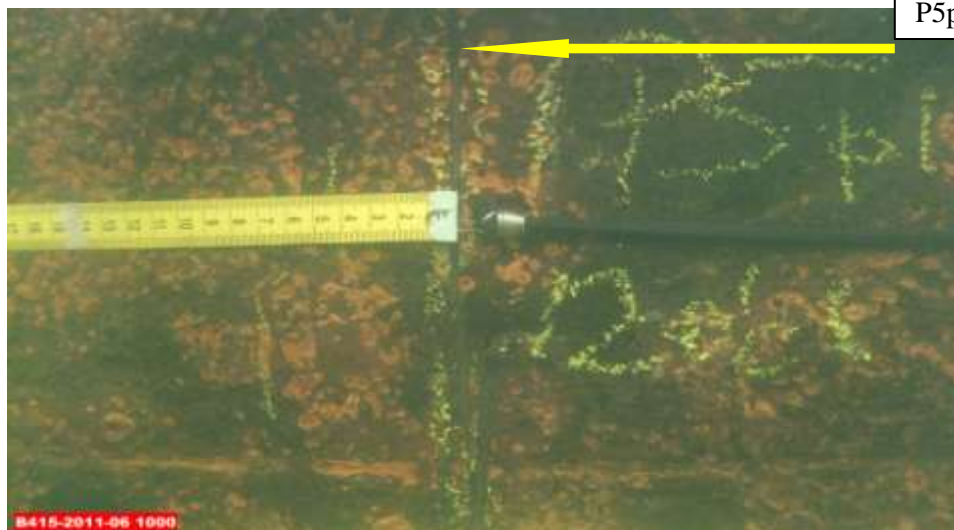
CDS was also engaged to fix a series of 12 glass plates to 4 locations over the cracks on these 3 piles. The 12x glass plates/slides (75mmx20mmx1mm) were attached over the cracks with 2part epoxy in the documented locations.

Graphite for the required areas was removed to a depth of about 10 to 15mm and epoxy balls that embedded the slides above and below the cracks were used to fix the glass plates.

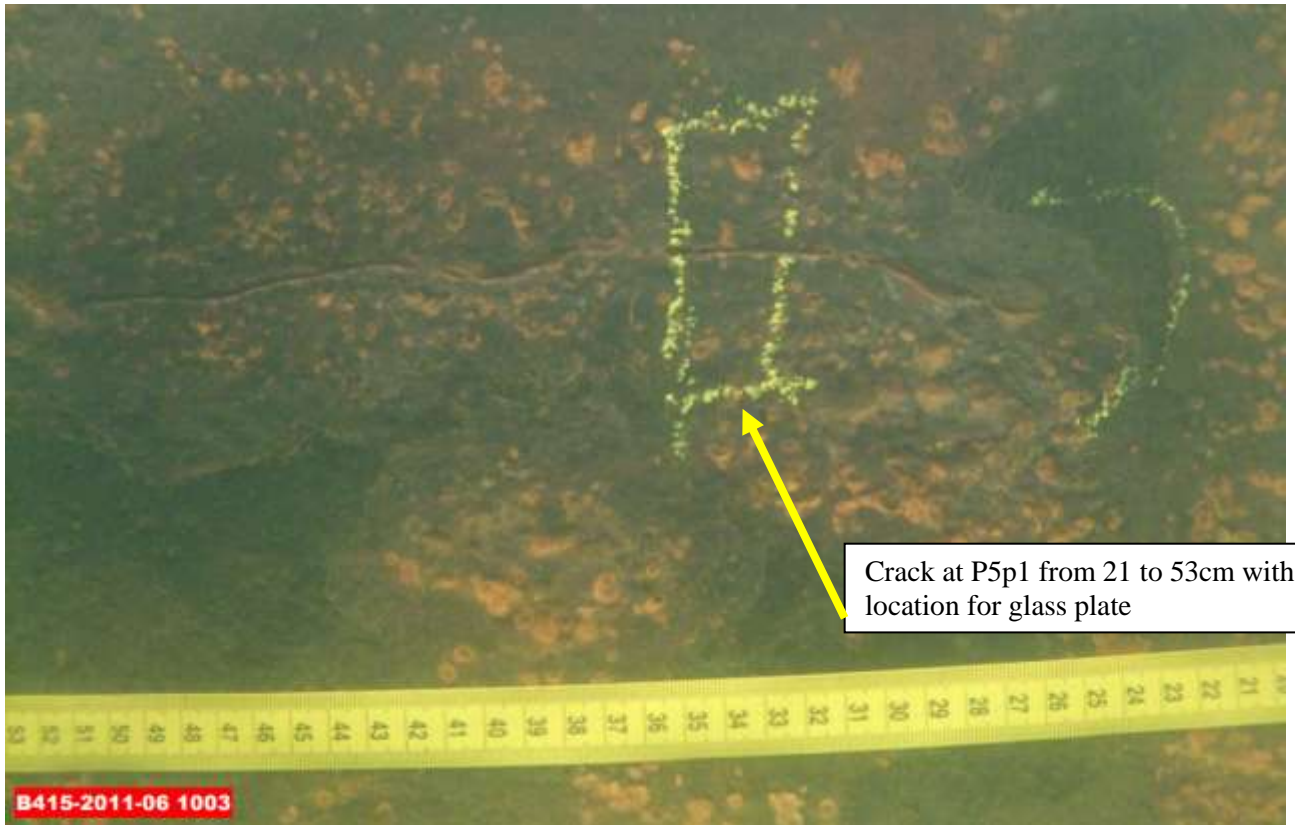
For ease of reference, a continuous yellow tape measure was fixed near each of the cracks in clockwise direction with reference 0.00m starting at the upstream, 12o'clock mark at each of the 3 locations. To aid in reproducibility, a vertical grind mark approximately 1mm wide and 200mm long was ground into each of the 3x 12o'clock locations at P5p1, P5p2 and P6p2. These marks can be clearly seen in the photos and should be relocatable in future.

All Photos, in sequential order for each crack location, are contained in the folder "B415 Windsor Bridge Follow-up Inspection 15.6.2011" in the Subfolders "P5p1 insp2"(photos 1000 to 1035), "P5p2 insp2"(photos 1036 to 1074) and "P6p2 insp2"(photos 1075 to 1101).

Some sample photos are set out below:



Start of reference tape measure, here P5p2, 12o'clock with reference grind



Crack at P5p1 from 21 to 53cm with location for glass plate



Glass plate on P5p1 at above location



P6p2 at 6oclock with location for glass plate



P6p2 with glass plate installed near 6o'clock



We trust the inspection has been completed to your requirements.
Please contact us if you require further clarification.

Yours sincerely

A handwritten signature in black ink, appearing to read 'Martin Woschitzka'.

Martin Woschitzka
Director
COMMERCIAL DIVING SOLUTIONS PTY LTD

ATT:

- 2x DVDs with electronic reports and Photo file "B415 Windsor Bridge Follow-up Inspection 15.6.2011"